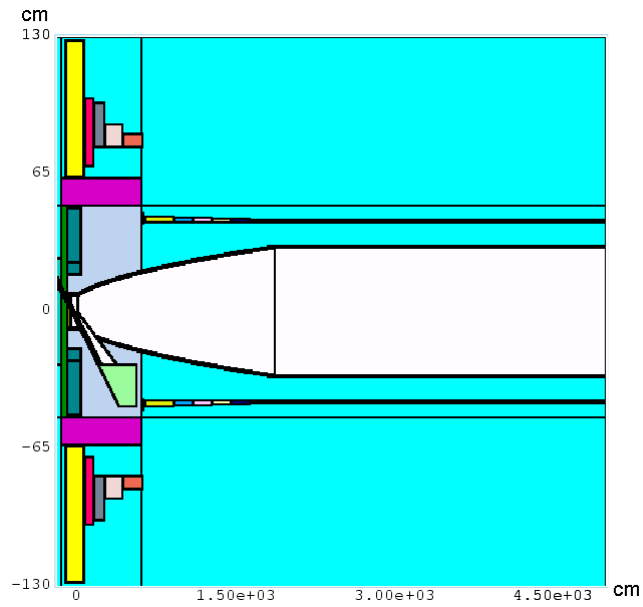


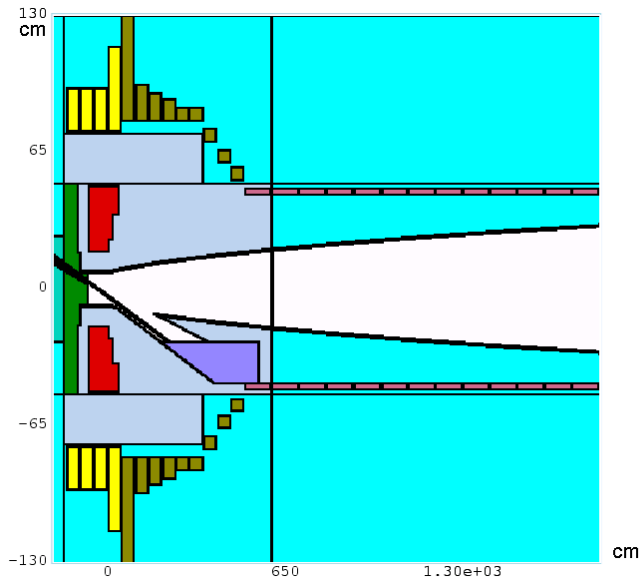
# Summary of the New SC Coils

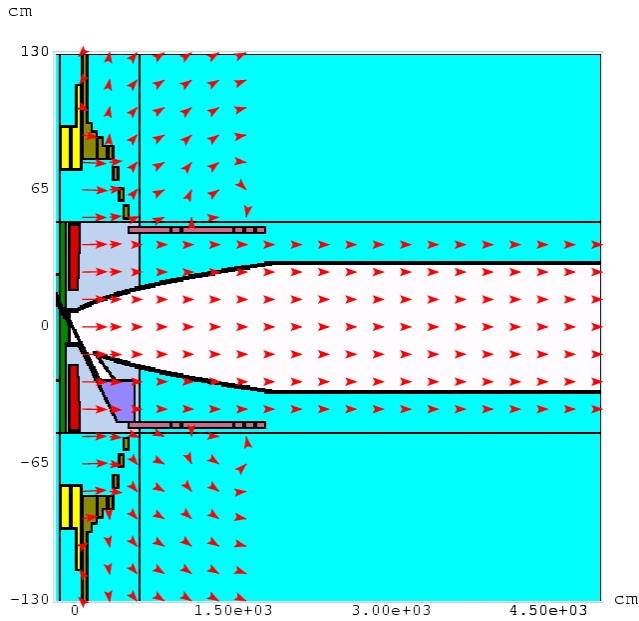
X. Ding  
(Aug. 16, 2010)

## 1. Study II SC Coils



## 2. New SC Coils and EB field





### 3. Meson Production

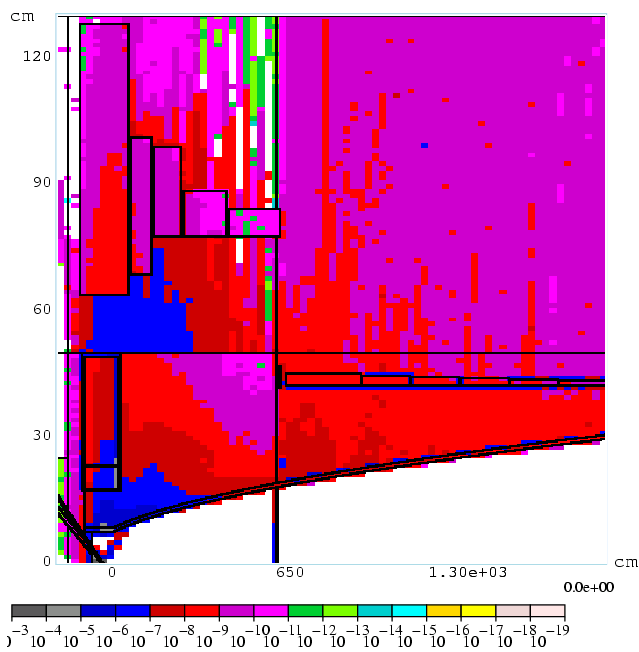
At 8GeV protons and 100000 events

	Mesons
<b>Study II SC Coils</b>	28758
<b>New SC Coils</b>	22627

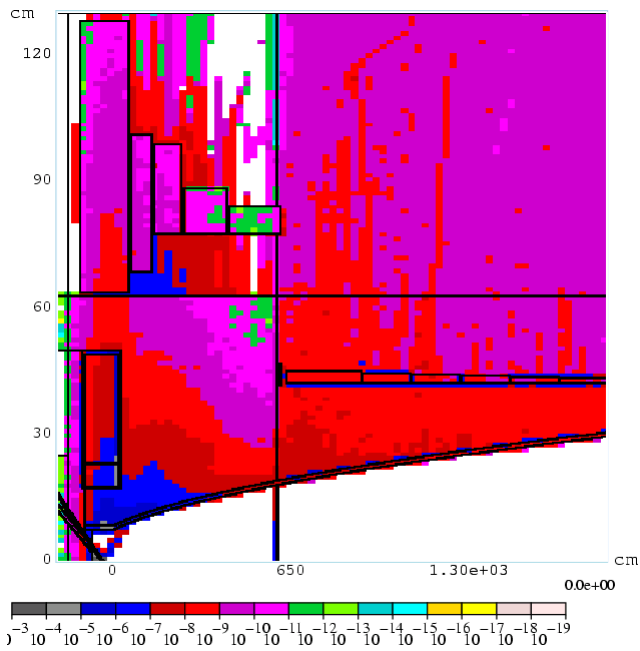
### 4. Energy Deposition

<b>New SC Coils</b>	Power dep. on SC #1-4, kW	Power dep. on SC #5-13, kW	Power dep. on SC# 14-26, kW	Total on SC #1-26, kW
Standard (80% WC+20% Water)	8.535	3.488	10.545	22.568
Enhanced (80% WC+20% Water)	1.1845	0.426	10.035	11.6455
Standard (pure W)	8.195	2.4525	10.35	20.9975
Enhanced (pure W)	0.717	0.17	10.3	11.187

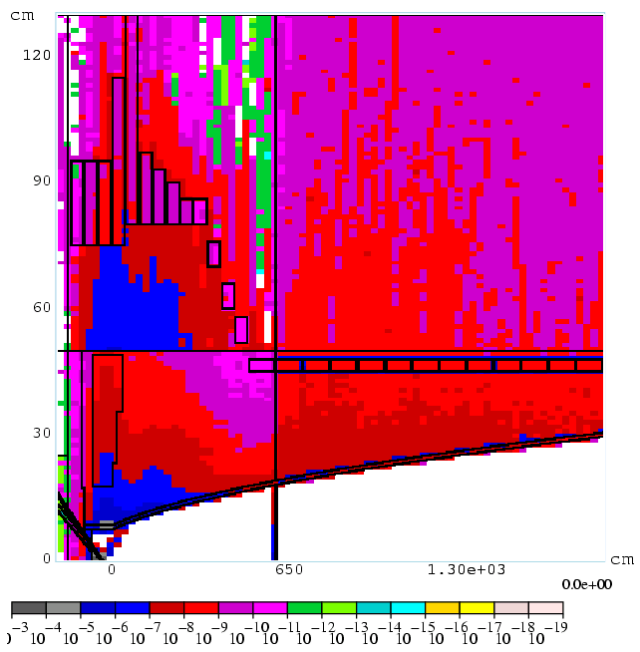
Study II SC Coils	Power dep. on SC #1, kW	Total power dep. on SC #1-13, kW
Standard (80% WC+20% Water)	24.905	36.13
Enhanced (80% WC+20% Water)	8.595	
Standard (pure W)	21.055	31.415
Enhanced (pure W)	6.345	14.05



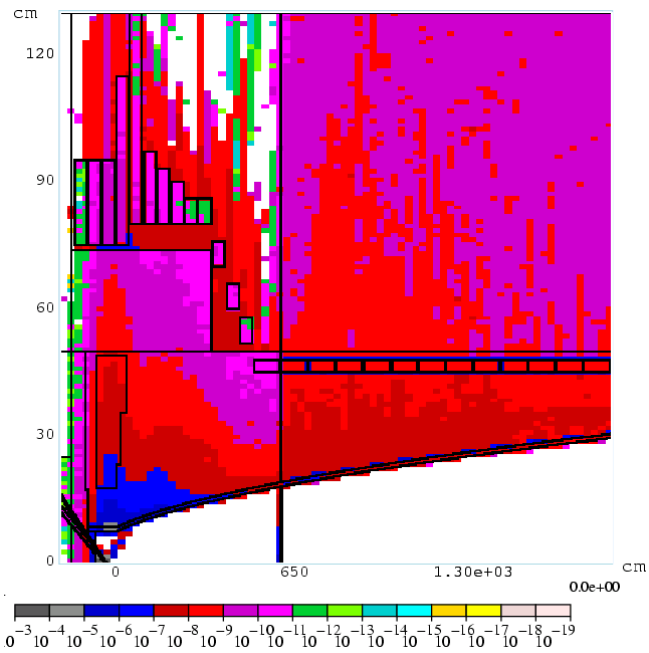
(Study II – Standard Geometry, WC shielding)



(Study II – Enhanced Geometry, WC shielding)



(New Coils – Standard Geometry, WC shielding)



(New Coils – Enhanced Geometry, WC shielding)