

# Fast camera capture of waterjet

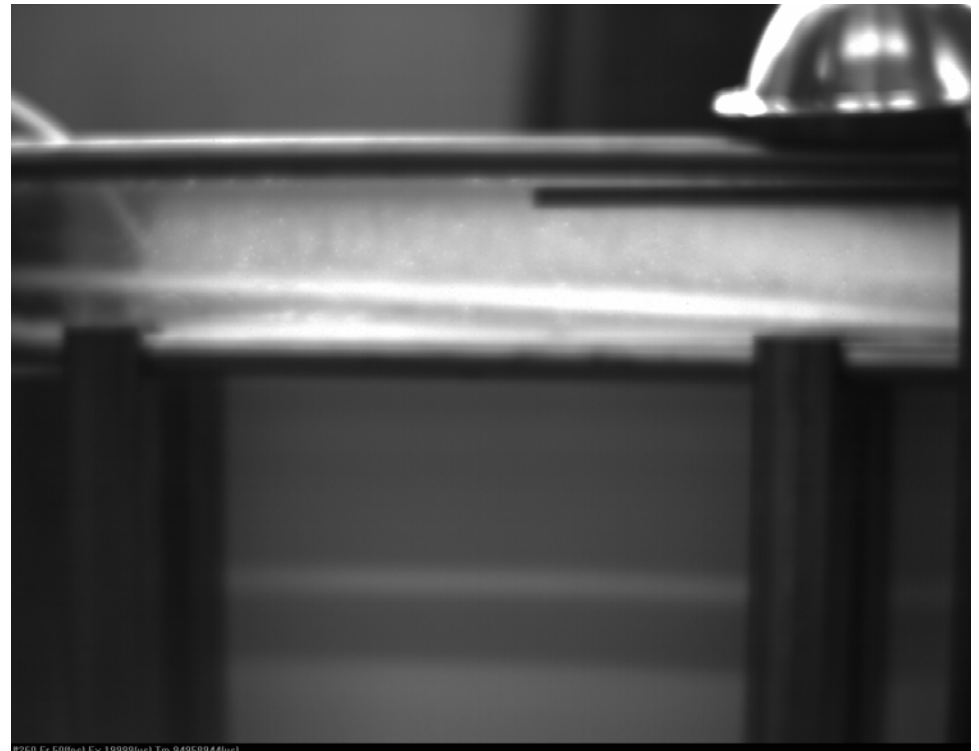
September 16, 2005 @ Princeton

Camera: FastVision 13 capability  
1280x1024 pixels, 500 frames/sec, 0.5 sec video  
or ...



nozzle: diameter ~8 mm, length 6-inch

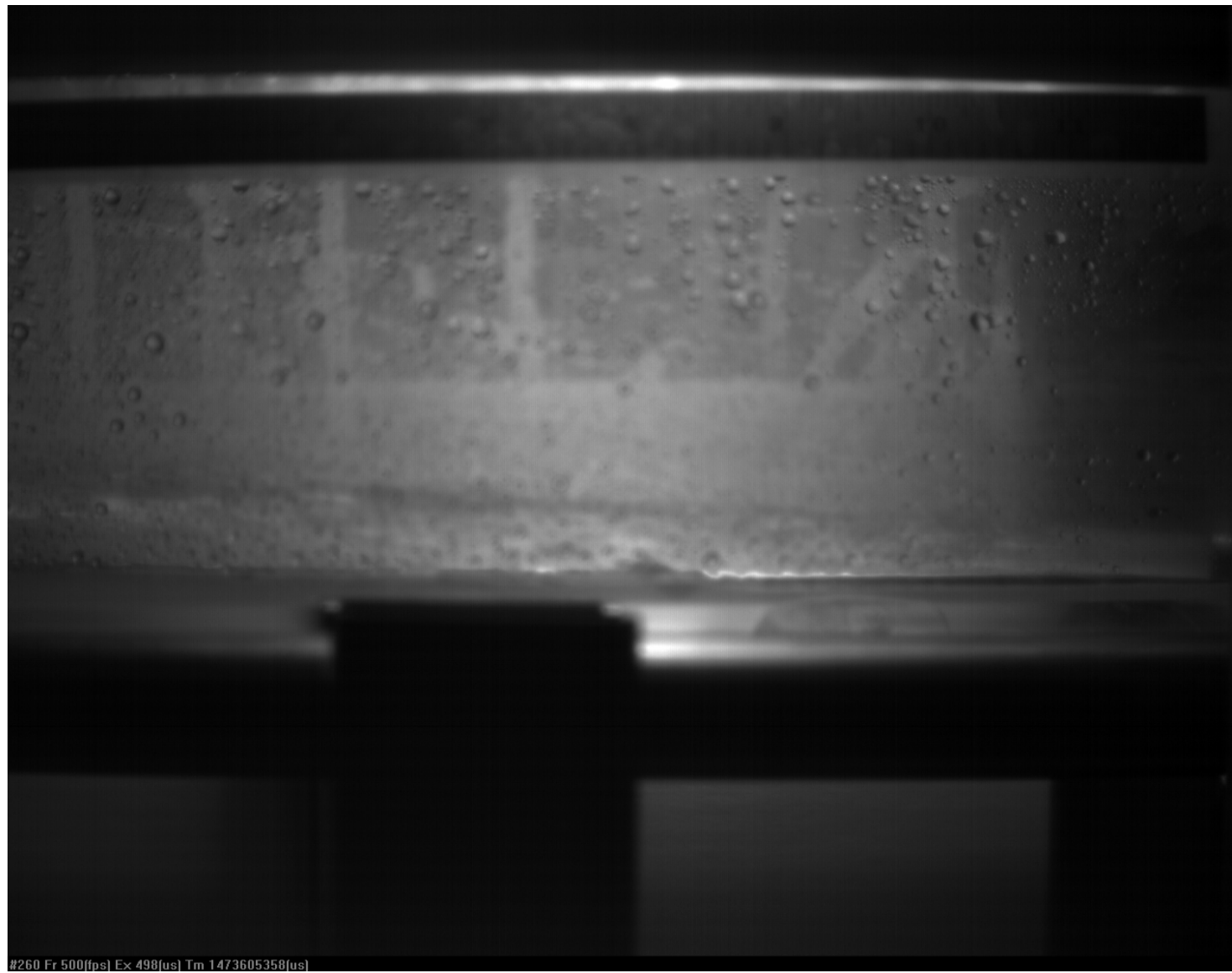
## waterjet in action: movie



1280x1000 pixels  
50 frame/sec  
1 second of video

close-up view of waterjet

1<sup>st</sup> run @ 8:25 am



#260 Fr 500[fps] Ex 498[us] Tm 1473605358[us]

22 cm

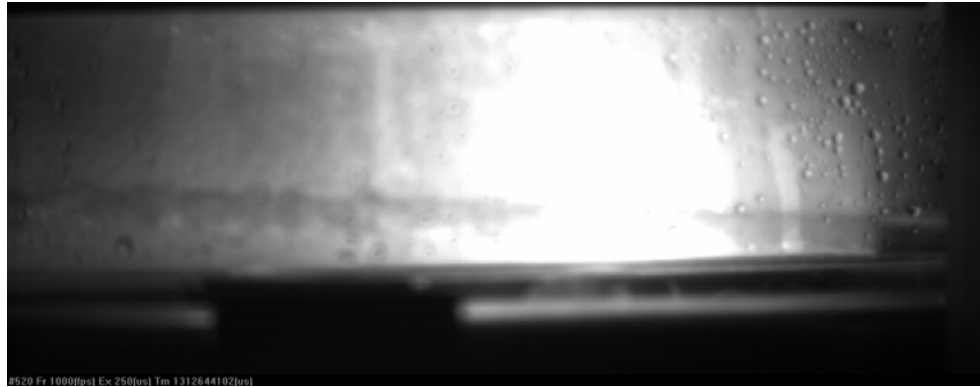
Frame rate: 500 frame/sec (2 ms per frame)  
1280x1000 pixels, exposure time 0.5 ms

**waterjet velocity ~15-20 meter/sec**

# waterjet at varies pump speeds

6<sup>th</sup>, 7<sup>th</sup>, & 8<sup>th</sup> runs @ 9:14 to 9:24 am

Frame rate: 1000 frame/sec (1 ms per frame)  
1280x500 pixels, exposure time 0.25 ms



full speed



75% speed

50% speed

**waterjet velocity**  
**~10, 12, & 7 meter/sec, respectively**



22 cm