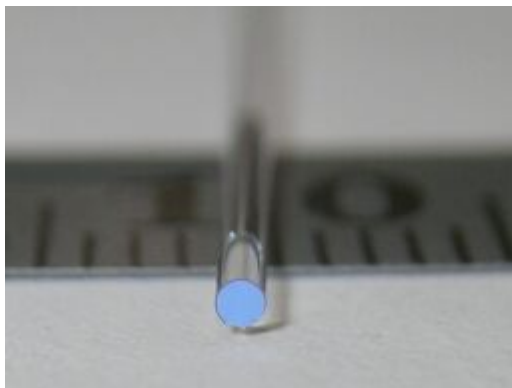
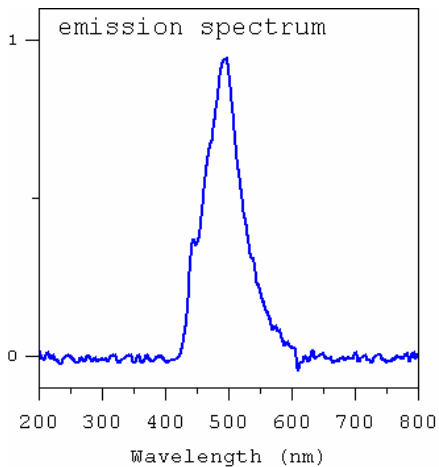
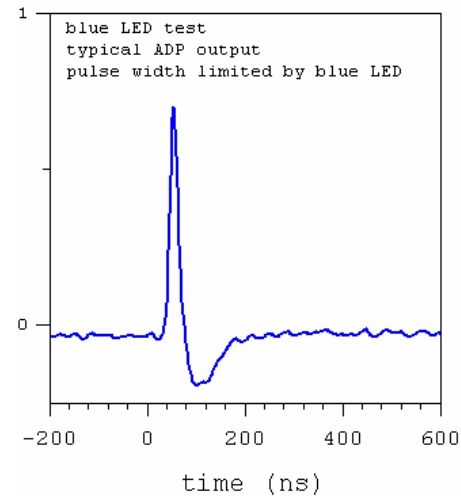
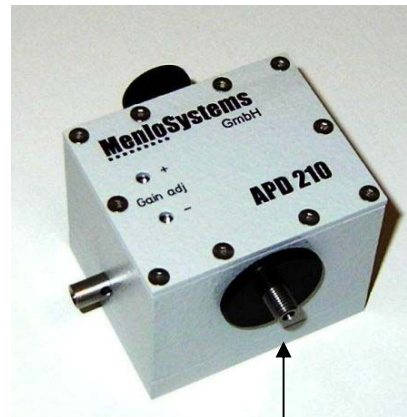


# Scintillating fiber channel #0 - Lab test results April 2007



Avalanche photodiode

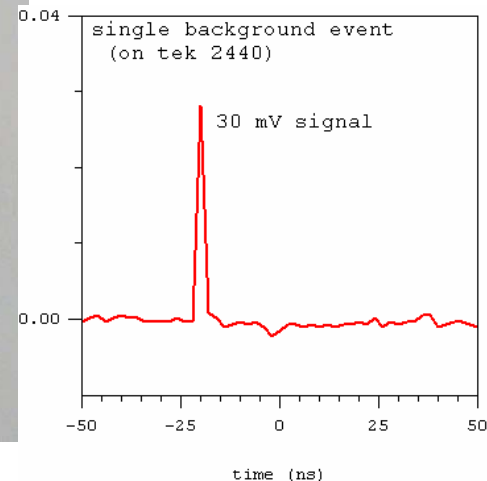


2 meter long, 1-mm diameter  
blue emission scintillating fiber



12 meter long, 1-mm diameter  
BFH37-1000 fiber

blue  $T=0.77$



# Scintillating fiber channel #0 – CERN background count, July 19, 2007

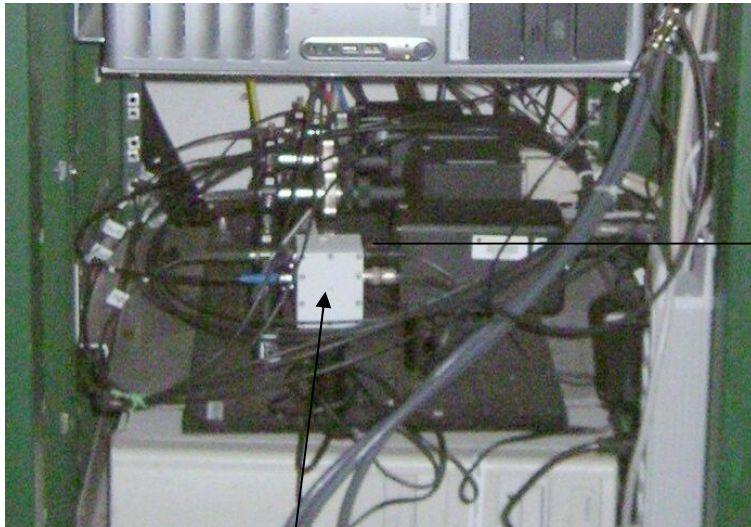
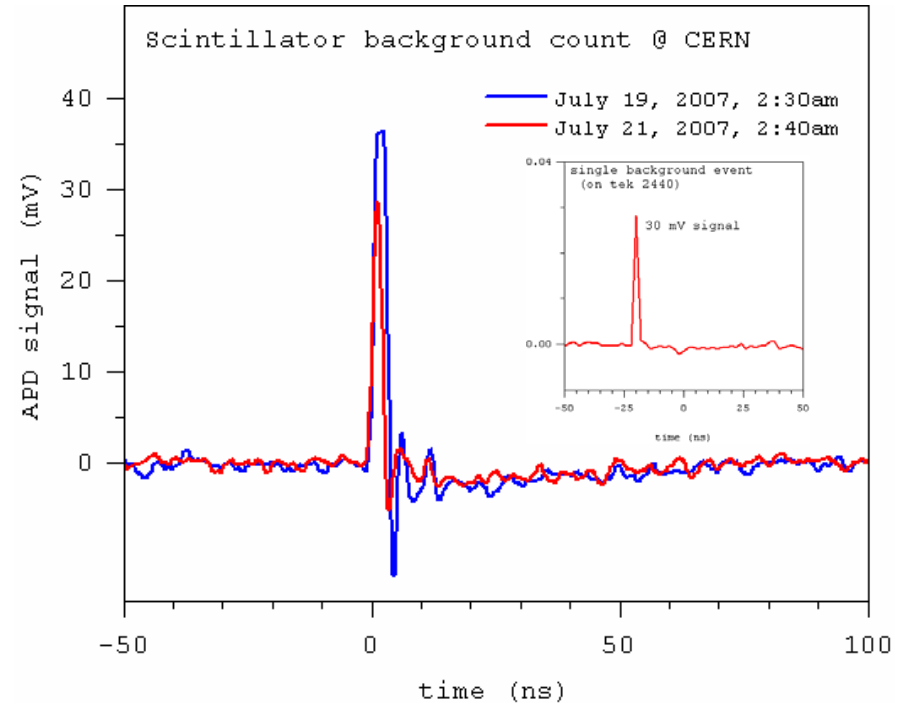
Monitor/control at BNL via RDC to CERN



12 meter long, 1-mm diameter  
BFH37-1000 fiber



2 meter long, 1-mm diameter  
blue emission scintillating fiber



Avalanche photodiode

