

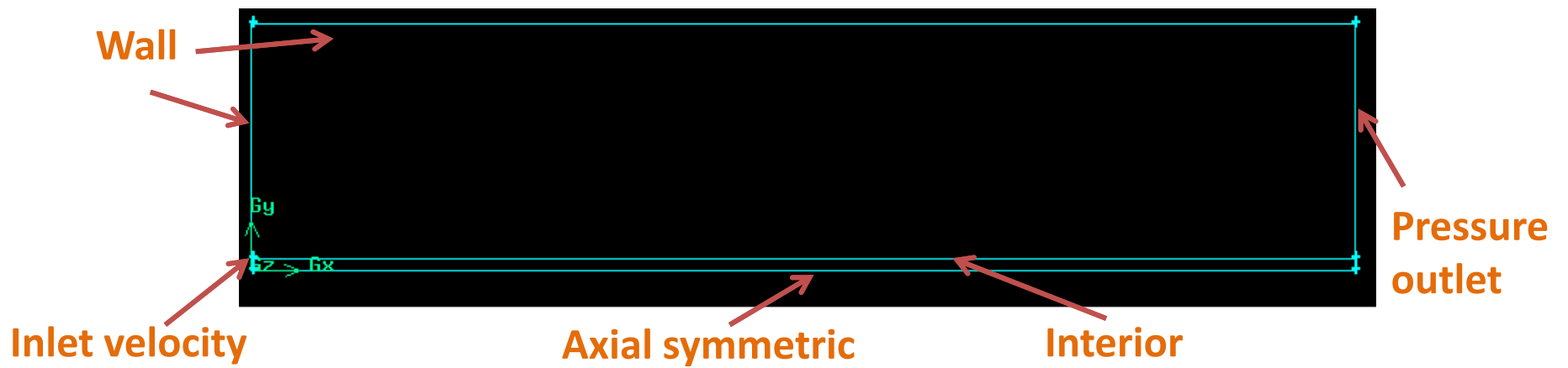
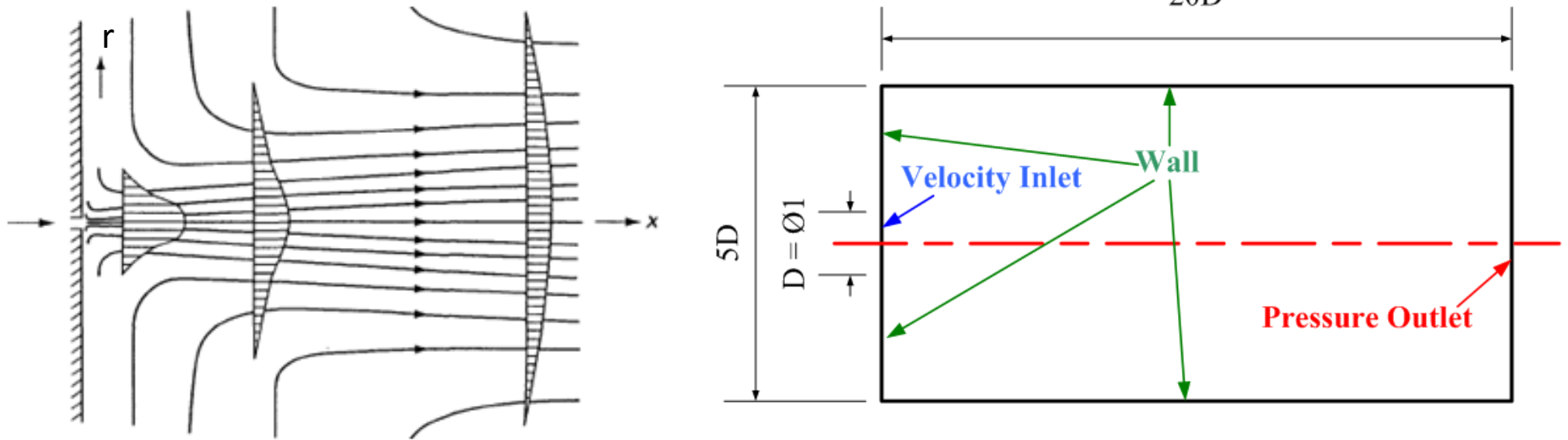
# 2D Turbulent Mercury Jet

Yan Zhan

SUNY Stony Brook

Dec. 19<sup>th</sup> 2013

# Problem1



# Problem1 -Jet Characteristics

- Physical Characteristics

Diameter (D)	Velocity	Turbulent Intensity	Length Scale
0.0102108 m	20 m/s	$u'/U = 0.05$	0.1D
Phase	Density	Viscosity	Surface Tension
Air	1.225	1.460735 m <sup>2</sup> /s	
Mercury	13456 kg/m <sup>3</sup>	1.1147×10 <sup>-7</sup> m <sup>2</sup> /s	0.4855 N/m

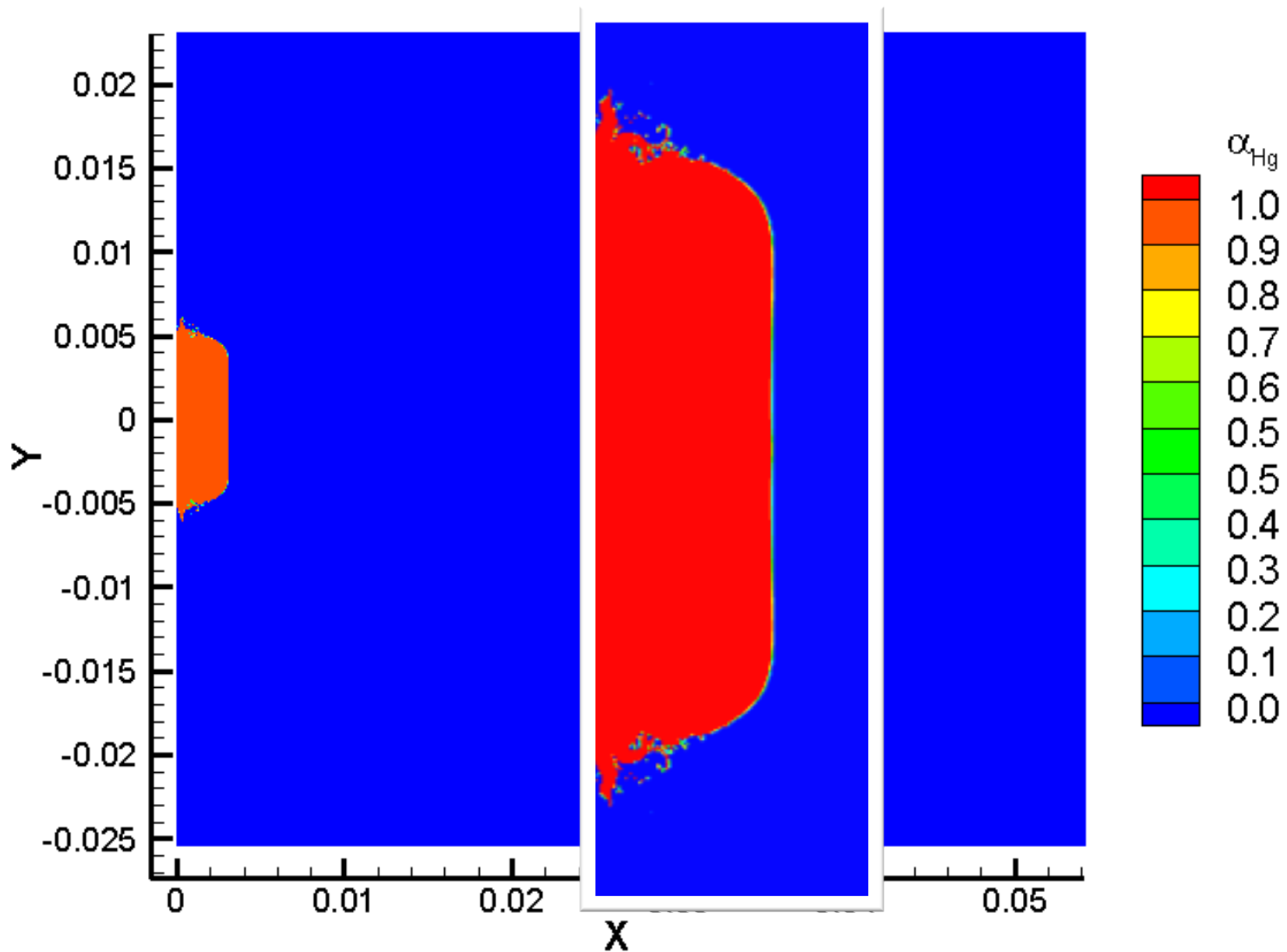
- Numerical Characteristics

- Determination of the mesh size:

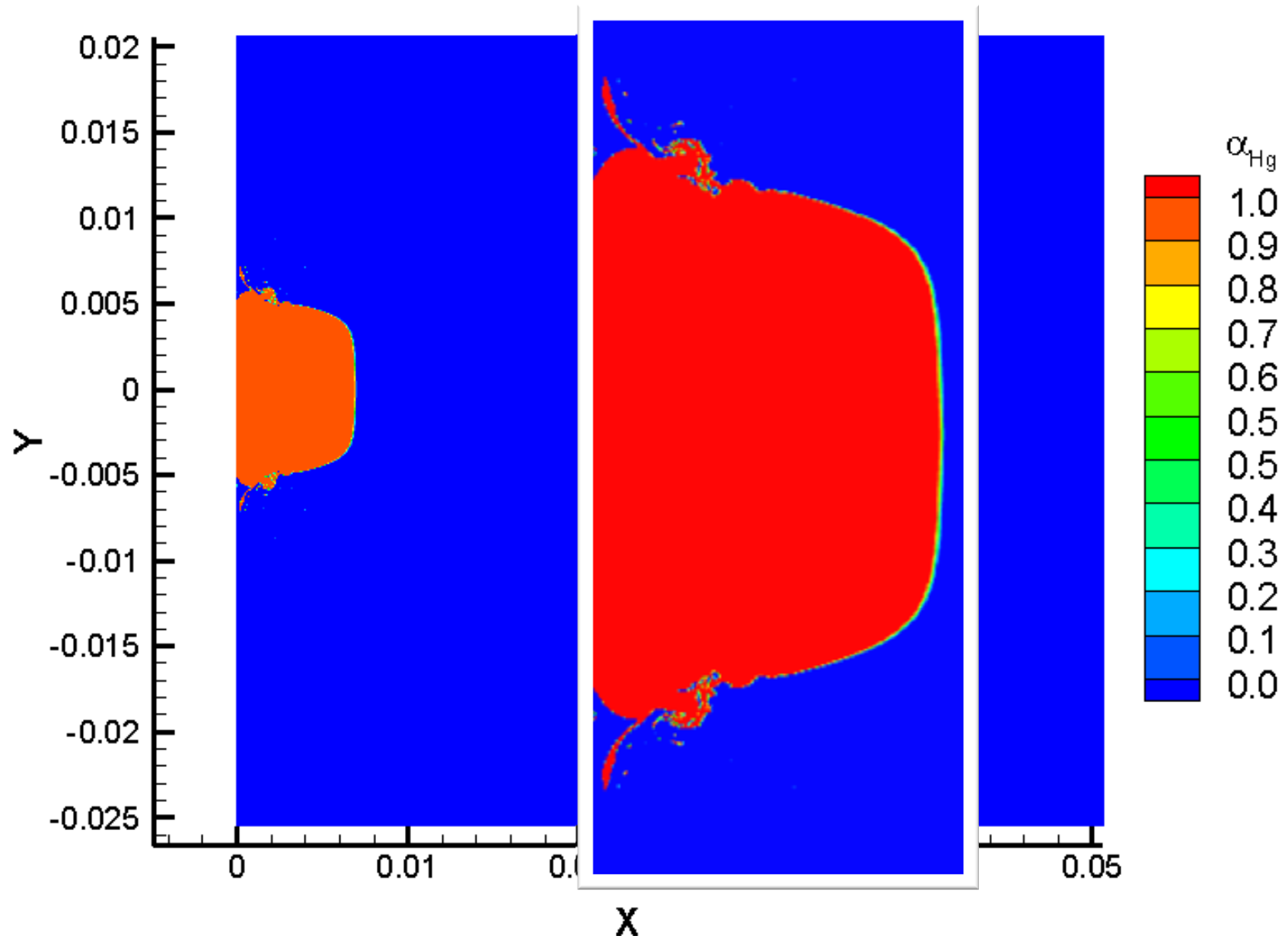
Assume only primary breakup, the critical liquid Weber number is less than 10, then  $\Delta x < 0.89 \mu\text{m}$  (mercury)

$$We \equiv \frac{\rho u^2 l}{\sigma}$$

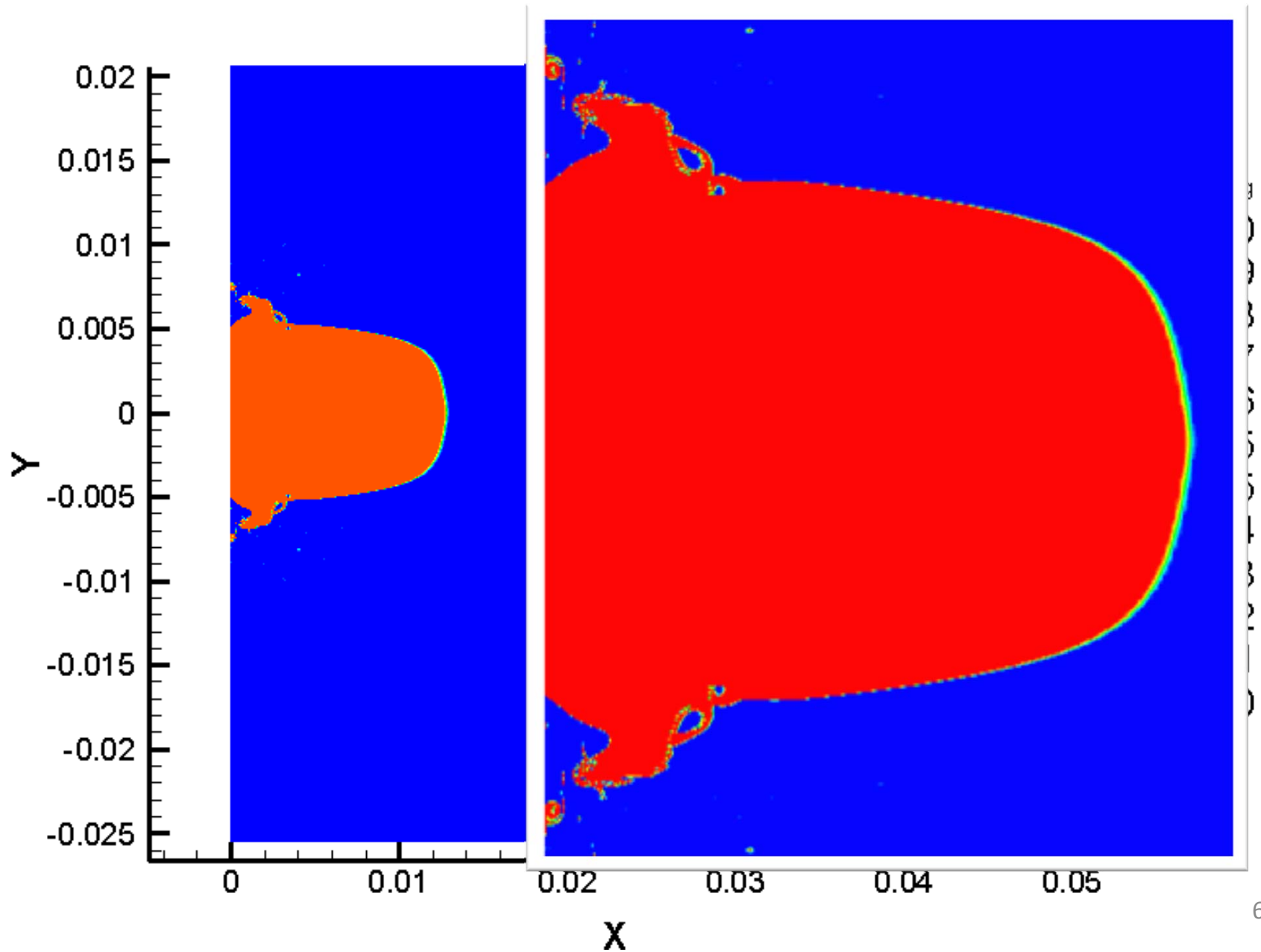
# Results \_\_ t = 0.15ms



# Results \_\_ t = 0.35ms



# Results \_\_ t = 0.6ms



# Results \_\_ t = 0.8ms

