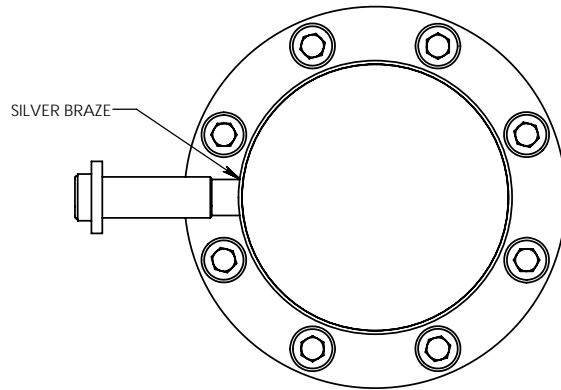
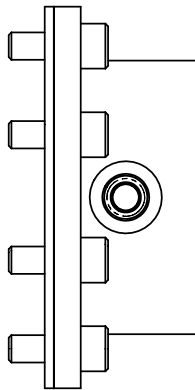


NOTES

1. WELDING TO BE PERFORMED IN ACCORDANCE WITH ASME SECTION IX. NO CODE STAMP REQUIRED.
2. ALL WELDS SHALL BE DYE PENETRANT INSPECTED. NO RADIOGRAPHY REQUIRED.
3. MATERIAL CERTIFICATIONS REQUIRED
4. ASSEMBLY TO BE PRESSURE TESTED TO 10 PSIG



7	8	Socket Head Cap Screw_Al	SS - 18-8	SHCS - 10-32 x 1/2	N/A
6	1	swagelok vcr tube connector	SS - 316	SECONDARY TUBE ASSY	N/A
5	1	swagelok vcr gasket 0.25	CU	SWAGELOK VCR GASKET, NON-RETAINED, CU-4-VCR-2-VS	N/A
4	1	swagelok vcr butt weld long hjt	SS - 316	SWAGELOK LONG TUBE BUTTWELD, 6LV-4-VCR-3-4TB2	N/A
3	1	swagelok vcr nut	SS - 316	SWAGELOK FEMALE VCR NUT, SS-4-VCR-1	N/A
2	1	window gasket hjt	1/16" BUNA-N SHEET, 50A	MCMMASTER-CARR #86715K279	203-HJT-0714
1	1	double window hjt	TITANIUM	1.90 OD x 1.00	203-HJT-0713
ITEM	Default/QTY.	NAME	MATERIAL	DESCRIPTION	DWG

<p>THIRD-ANGLE PROJECTION</p>	<p>This drawing was prepared by ORNL solely for use in work performed under Department of Energy contract number DE-AC05-00OR22725 and applicable Work for Others Agreements and Cooperative Research and Development Agreements. This drawing is property of ORNL and must be returned upon request.</p>		<p><b>OAK RIDGE NATIONAL LABORATORY</b> operated for the U.S. Department of Energy under contract DE-AC05-00OR22725 Oak Ridge, TN</p>			
	<p>UNLESS OTHERWISE NOTED</p> <p>1. ALL DIMENSIONS ARE IN INCHES</p> <p>2. INTERPRET DIMENSIONS AND TOLERANCES PER ASME Y14.5M</p> <p>3. MACHINED FINISH 125 MICRO-INCHES RMS</p> <p>4. CONCENTRICITY .010 TIR</p> <p>5. MACHINED ANGLES ±1/2°</p> <p>6. FORMED ANGLES ±1°</p> <p>7. BREAK SHARP CORNERS AND REMOVE ALL BURRS</p> <p>8. WHOLE NUMBERS AND FRACTIONS ±1/16</p> <p>9. X DECIMALS ±.030</p> <p>10. XX DECIMALS ±.010</p> <p>11. XXX DECIMALS ±.005</p>		<p><b>REMOTE SYSTEMS GROUP</b> NUCLEAR SCIENCE &amp; TECHNOLOGY DIVISION</p>			
DES	V GRAVES	09/26/2005	<p><b>MERIT EXPERIMENT</b> <b>SECONDARY CONTAINMENT ASSY</b> <b>DBL WINDOW MONITORED - UPSTREAM</b></p>			
DRW	T OQUIN	09/26/2005				
CHK	P SPAMPINATO	01/17/2006				
ENG	V GRAVES	09/26/2005				
QA			<p>CAD FILE</p> <p>DOUBLE WINDOW MONITORED</p>	<p>PREV ASSY</p> <p>203-HJT-0710</p>	<p>SCALE</p> <p>3:2</p>	<p>SHEET</p> <p>1 of 1</p>
DRAWING APPROVALS		DATE	<p>SIZE</p> <p>C</p>	<p>DWG NO.</p> <p>203-HJT-0712</p>	<p>REV</p> <p>0</p>	