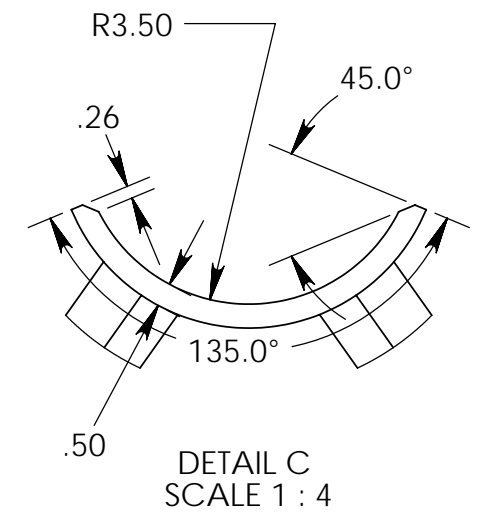
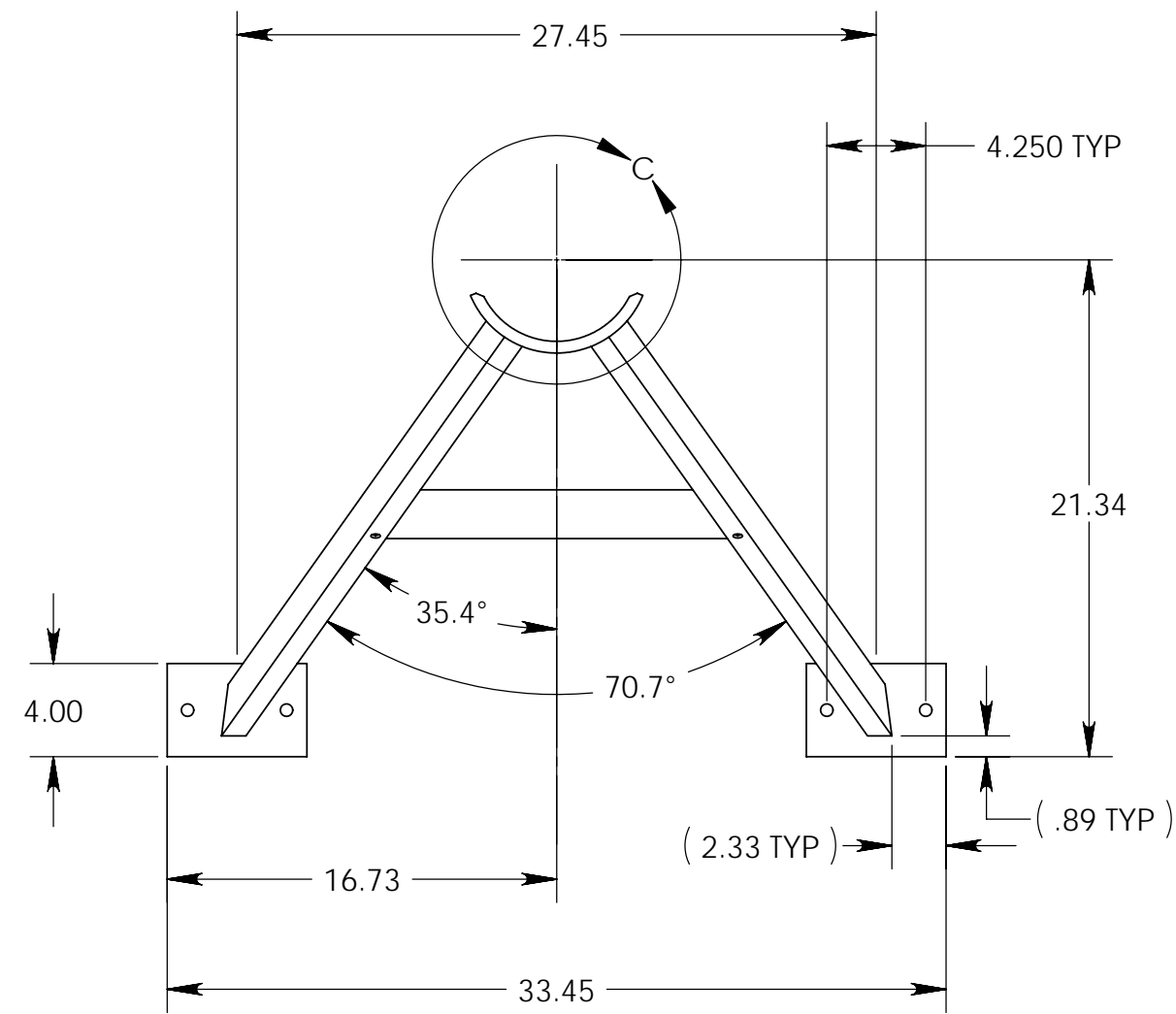
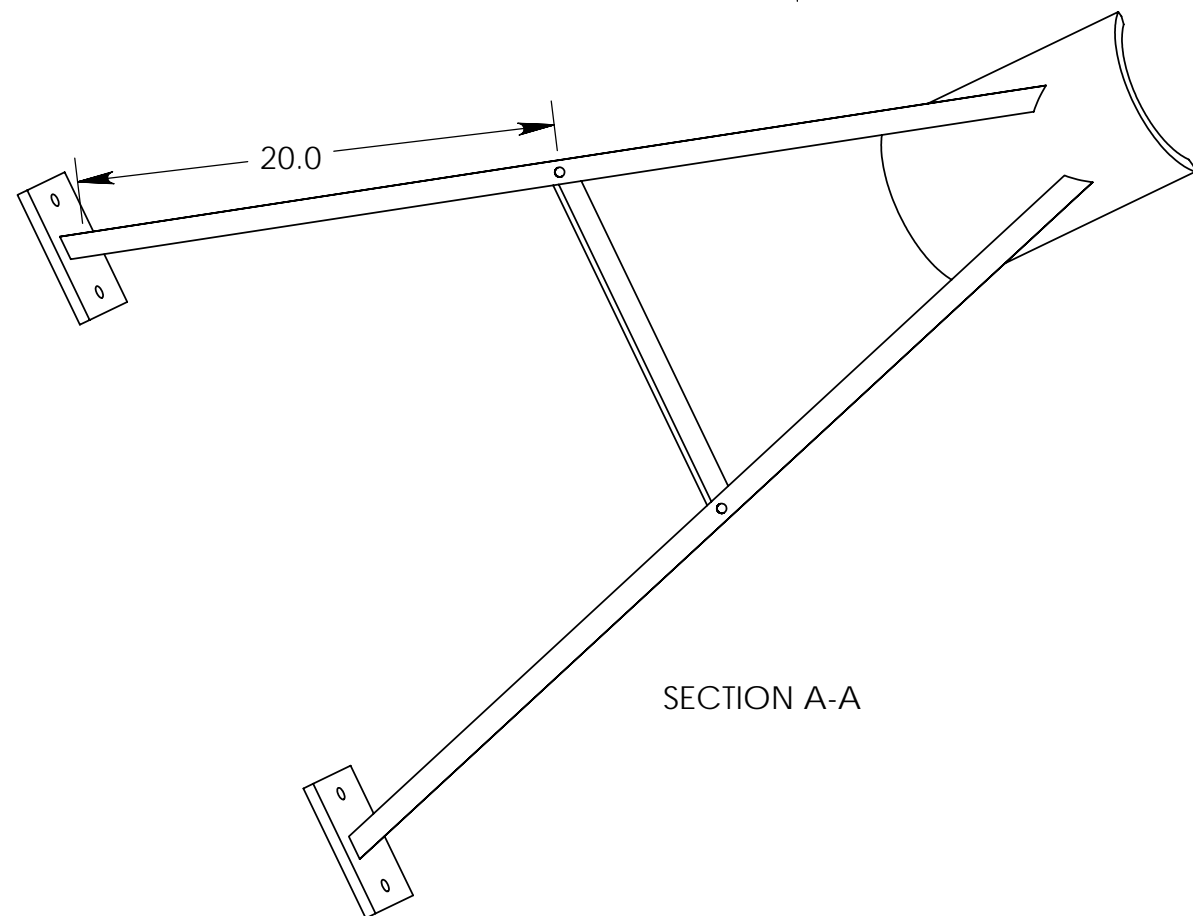
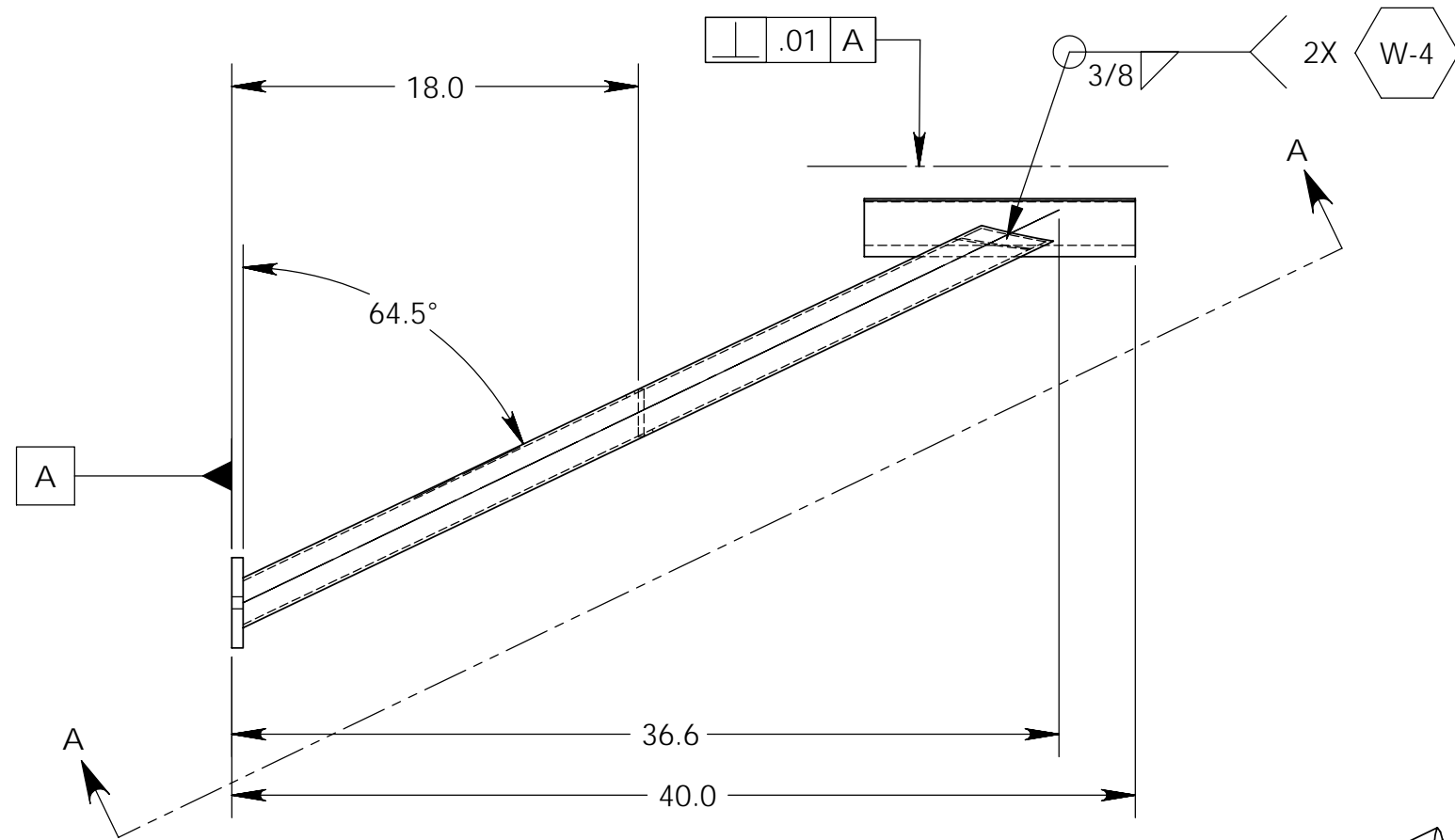
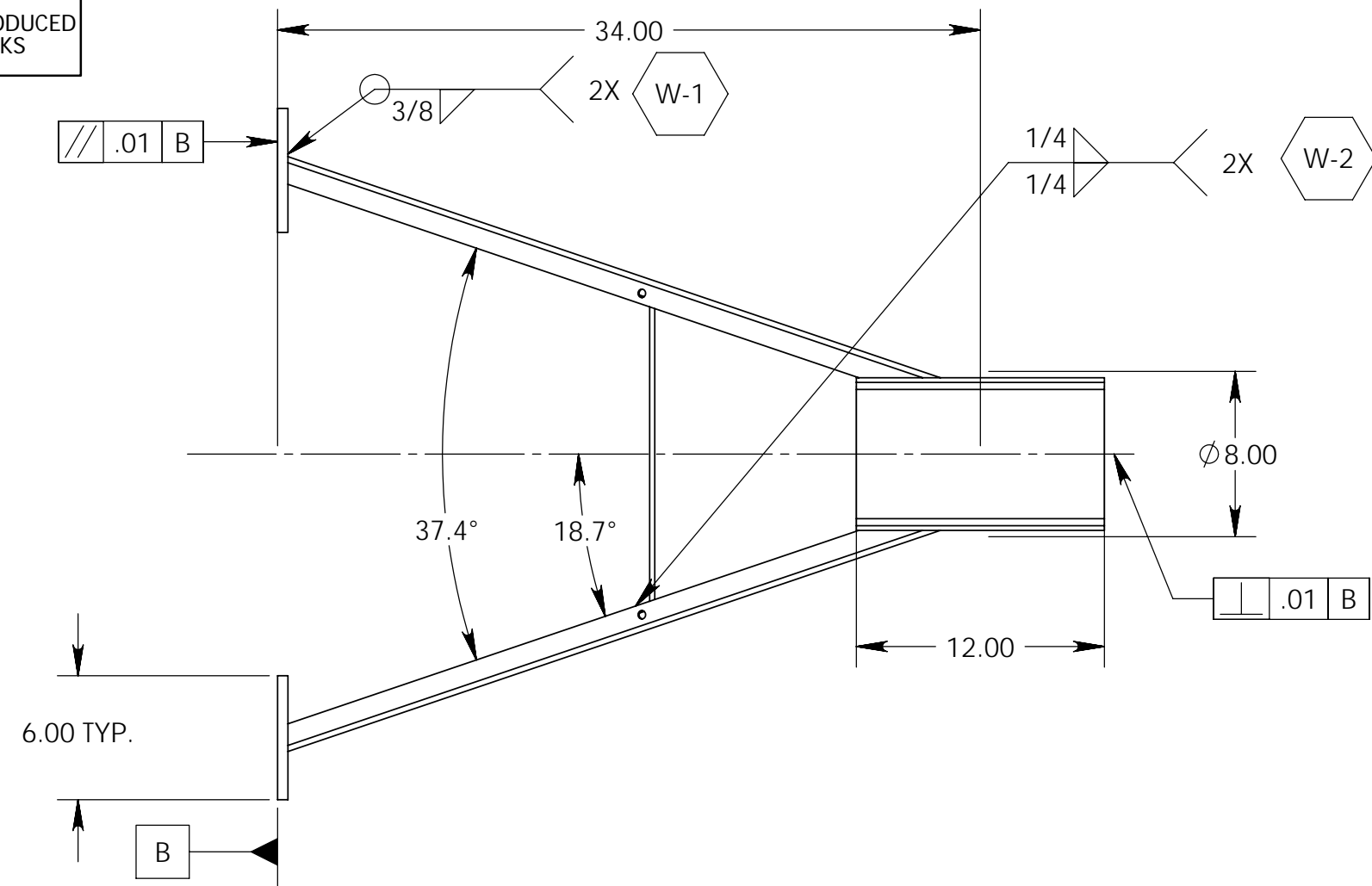


S THIS DRAWING PRODUCED ON SOLIDWORKS



NOTES

1. WELDING & INSPECTIONS SHALL BE PERFORMED IN ACCORDANCE WITH AWS D.1.2
2. ALL WELDS SHALL BE DYE PENETRANT INSPECTED
3. MATERIAL CERTIFICATIONS REQUIRED

ITEM NO.	QTY.	DESCRIPTION	MATERIAL	LENGTH
4	2	TUBE, 1.00 x 2.00 x .13	AL 6063 - T52, ASTM B-221	44
3	1	BAR, 2.10 x .25 x 14.11	AL 6061-T6511, ASTM B-221	14.11
2	1	DRAWN SEAMLESS TUBE, 8.00 OD x 1" WALL	AL - 6061-T6, ASTM B-210	12.00
1	2	PLATE, 4.00 x 6.00 x .50	AL - 6061-T6511, ASTM B-221	6.00

THIRD-ANGLE PROJECTION

UNLESS OTHERWISE NOTED

1. ALL DIMENSIONS ARE IN INCHES
2. INTERPRET DIMENSIONS AND TOLERANCES PER ASME Y14.5M
3. MACHINED FINISH 125 MICRO-INCHES RMS
4. CONCENTRICITY .010 TIR
5. MACHINED ANGLES ±1/2°
6. FORMED ANGLES ±1°
7. BREAK SHARP CORNERS AND REMOVE ALL BURRS
8. WHOLE NUMBERS AND FRACTIONS ±1/16
9. X DECIMALS ±.030
10. XX DECIMALS ±.010
11. XXX DECIMALS ±.005

**ORNL** OAK RIDGE NATIONAL LABORATORY  
operated for the U.S. Department of Energy under contract DE-AC05-00OR22725 Oak Ridge, TN

**NSTB** REMOTE SYSTEMS GROUP  
NUCLEAR SCIENCE & TECHNOLOGY DIVISION

**MERIT EXPERIMENT  
SECONDARY CONTAINMENT ASSY  
SUPPORT CRADLE**

CAD FILE	PREV ASSY	SCALE	SHEET
SUPPORT CRADLE HJT	203-HJT-0720	1:8	1 of 1
SIZE	DWG NO.	REV	
C	203-HJT-0721	0	

DWG NO. 203-HJT-0721