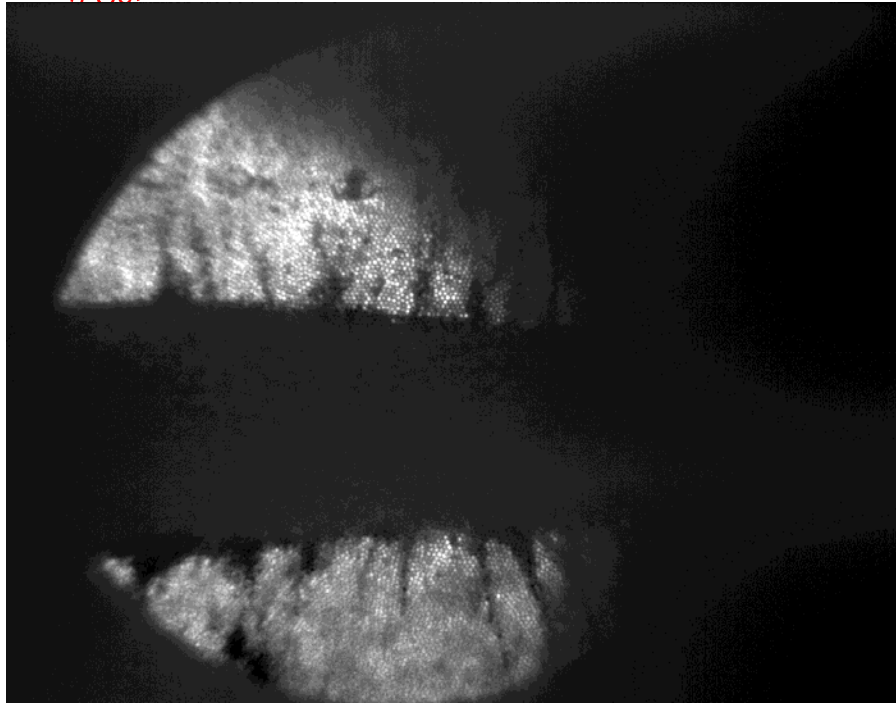


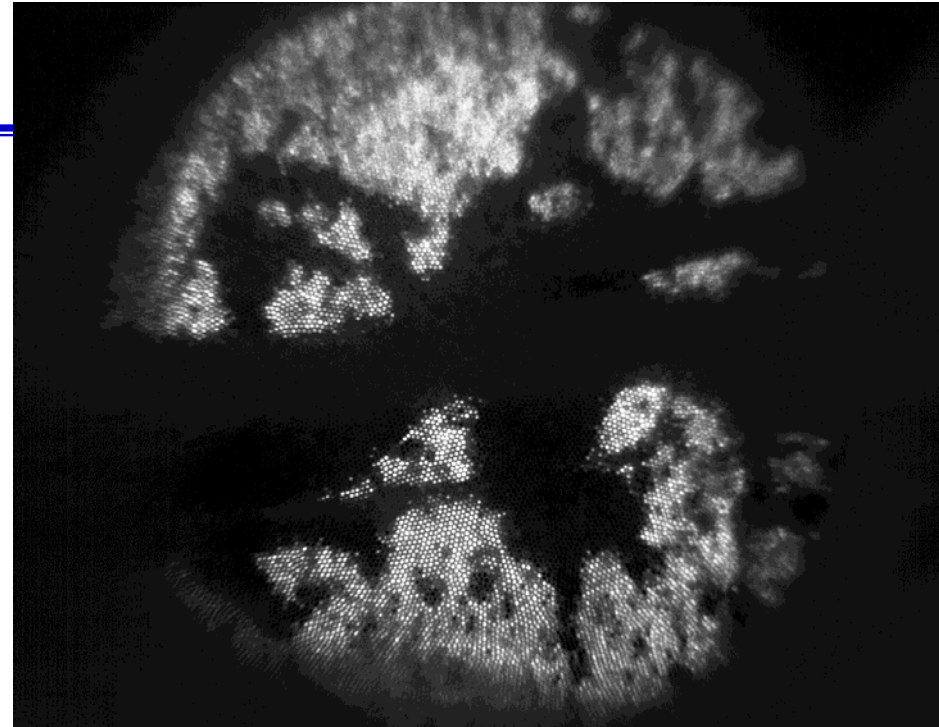


14 GeV Proton Beam on Hg Jet with Magnetic Field

Viewport 1 at 2ms



Viewport 3 at 26ms



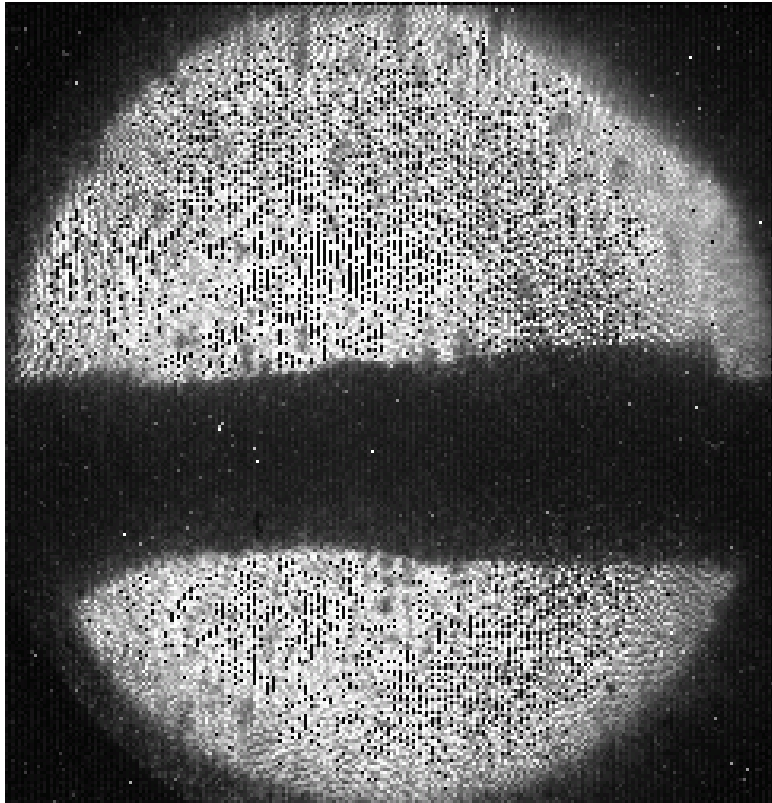
October 26, 2007
Beam Pulse at 8:39pm
Central European Daylight Time

Hg Jet 15m/s
Solenoid Field 5T
Proton Intensity 10TP

BROOKHAVEN
NATIONAL LABORATORY

Harold G. Kirk
Brookhaven National Laboratory

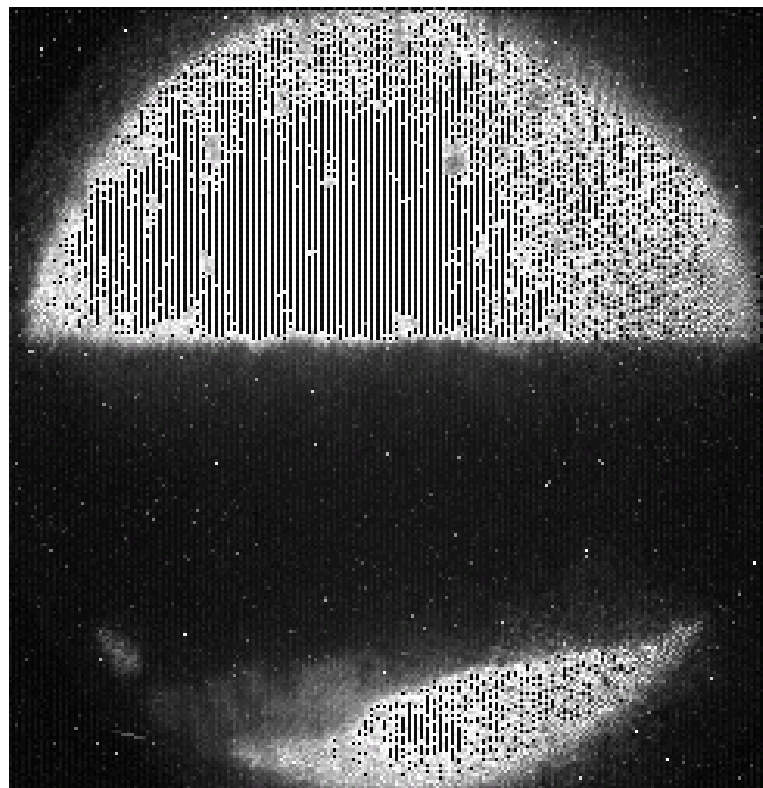
15TP 14GeV Proton Beam



Oct. 27, 2007
Solenoid Field
at 5T

Beam 5016, Hg 15m/s, 100 μ s/frame, Total 1.6ms

20TP 14GeV Proton Beam

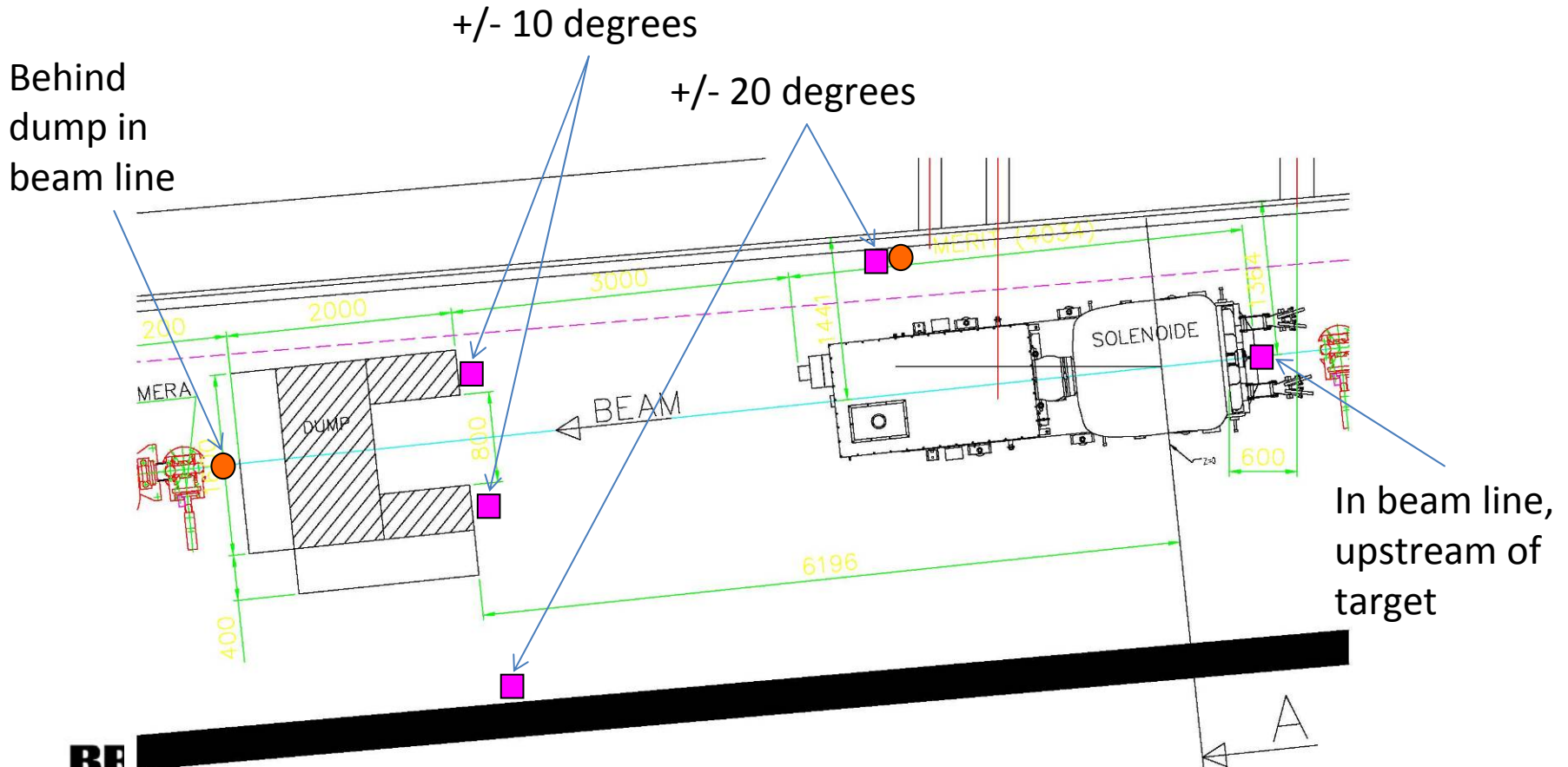


Oct. 27, 2007
Solenoid Field
at 10T

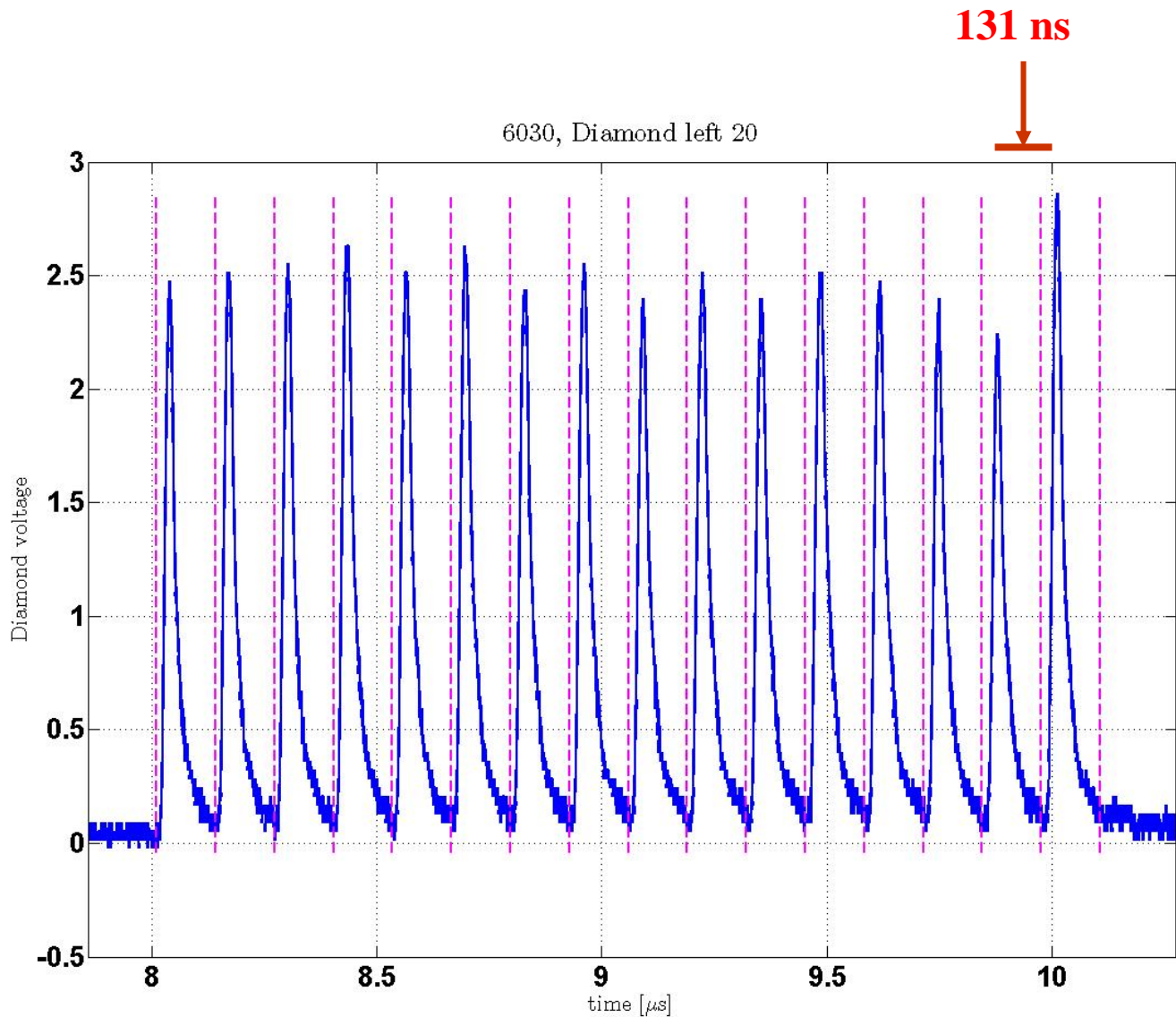
Beam 5020, Hg 15m/s, 100 μ s/frame, Total 1.6ms

The Pump/Probe Detectors

- ACEM (Aluminum Cathode Electron Multiplier)
- Diamond



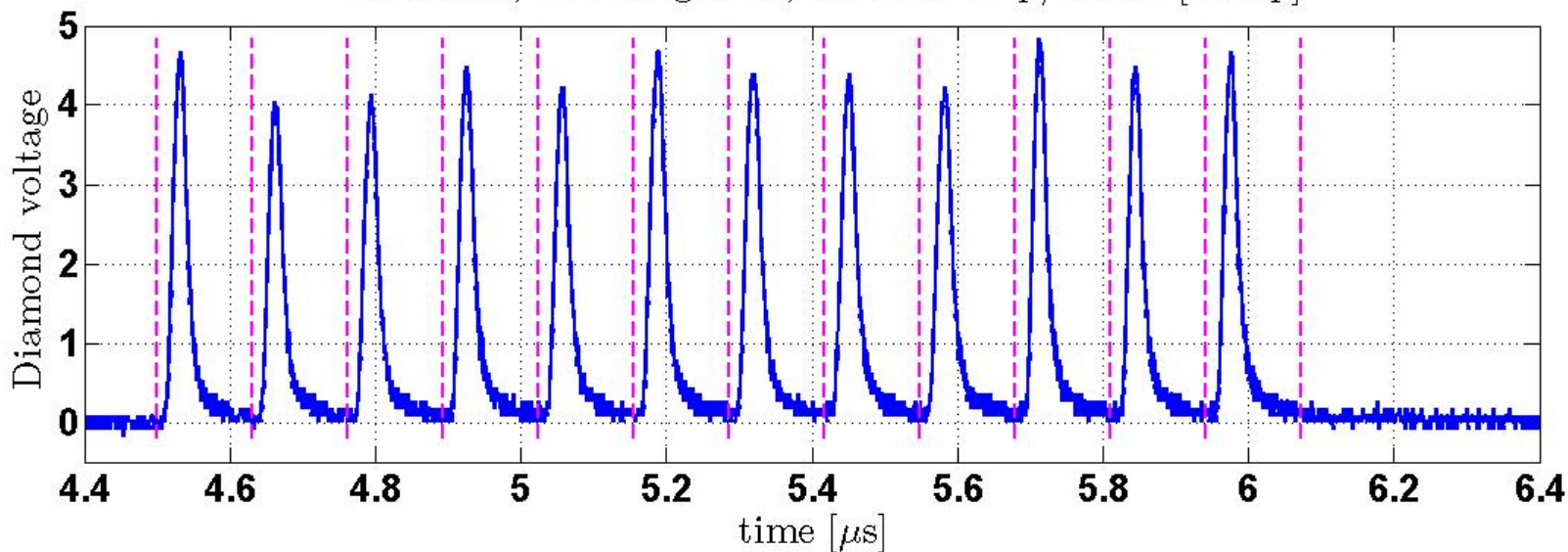
Diamond Left 20⁰ Response



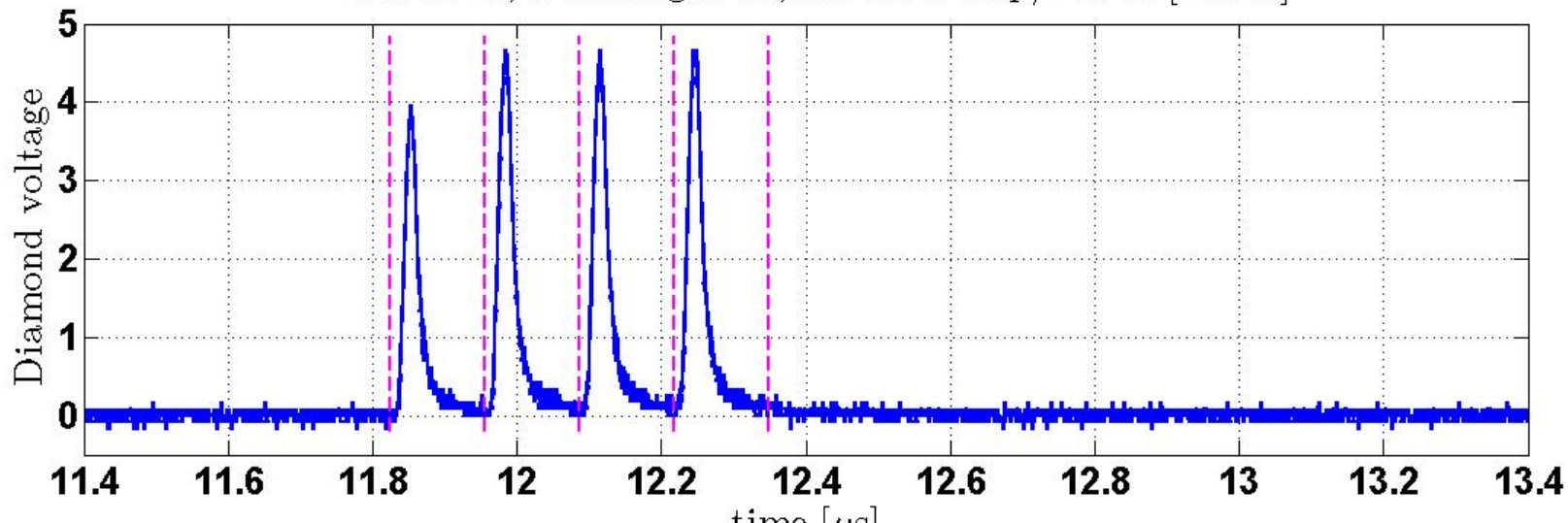
Oct. 29, 2007
14 GeV
4TP
10T Field
15m/s Hg Jet

A 3T Pump Pulse and a 1TP Probe Pulse with 1ms delay

Run 3011, Diam right 10, 1.0 ms Pump/Probe [Pump]



Run 3011, Diam right 10, 1.0 ms Pump/Probe [Probe]





MERIT Status

- **First Beam-on-Target: October 17, 2007**
- **First Beam-on-Target with field: October 26, 2007**
- **14 GeV Proton Beam run underway**
- **Pump/Probe studies: October 30-31, 2007**
- **24 GeV Proton Beam Studies: November 1-10**