

MERIT Installation Status

K. McDonald

June 20, 2007

Access to TT2/TT2A tunnels only when no possibility of dumping PS beam on the nearby D3 dump, \Rightarrow our installation interrupts PS/SPS operations.

8-hr access on Mon 4 June, 5-hr access on Mon 11 June for cabling: AC power, ethernet, beam instrumentation.

11-hr access on Thu 11 June, 9-hr access on Mon 18 June for heavy rigging: solenoid, DVB, heater, transfer lines, racks, beam magnets.

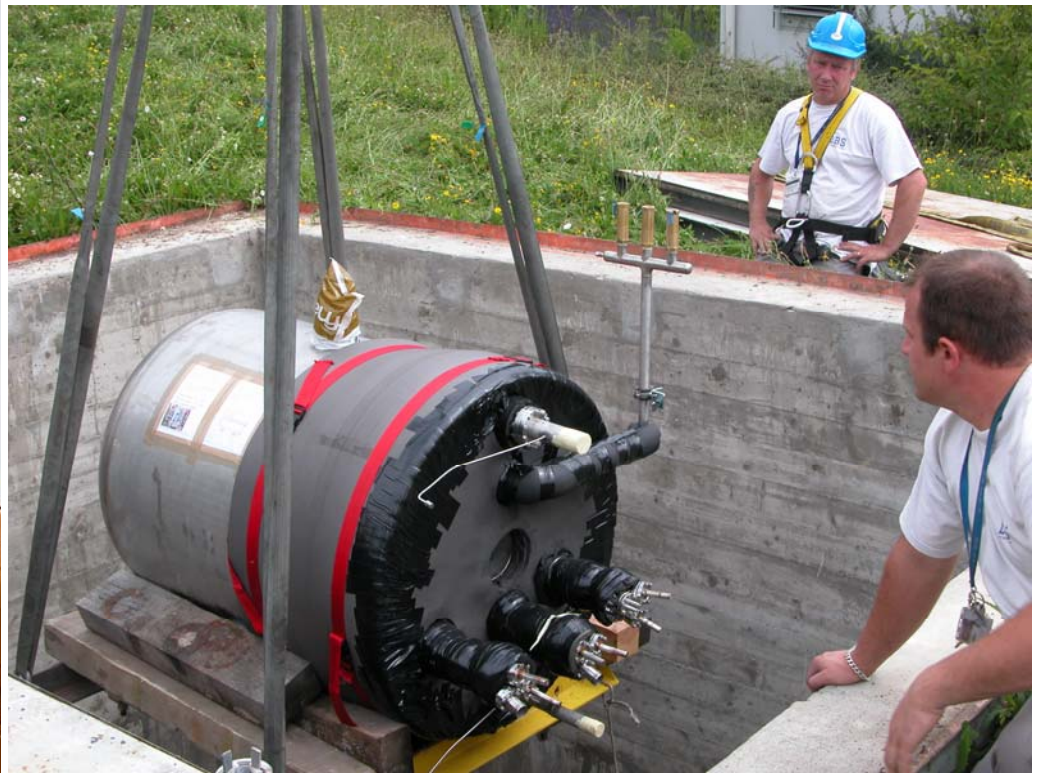
Solenoid mated with Hg system, both tilted by 67 mrad & nominally on beam.

Beam magnet reinstallation partially completed.

Fiberoptics connected between cameras and snout: realignment needed.

Secondary particle detectors partially installed.

Lowering of Solenoid into TT2 tunnel, 14 June



Mating of Solenoid and Hg System, 14 June



Al bus bars mounted,
18 June



DVB and Heater Installation, 14 June



Vertical bend reinstalled, beam collimator installed, beam monitors installed,
18 June



Partial Installation of Secondary Particle Detectors, 18 June



Fiberoptics Connected, 18 June

The fragile fibers remain somewhat exposed!

Groundwater leak at lower end of cable penetration!



To Do:

1st 8-hr access:

Complete reinstallation of beamline components.

Connect solenoid power and instrumentation.

Realign fiberoptics.

Complete installation of secondary particle detectors.

[Begin installation of cryo lines, if ATLAS schedule permits.]

2nd (3rd) 8-hr access(es):

Complete installation of cryo system.

None of these accesses are presently scheduled.

What Can We Do When?

After 1st 8-hr access:

Commission beamline for MERIT conditions.

Some beam pulses onto mercury jet target (activation!).

Calibrate secondary particle detectors vs. beam intensity.

Can make occasional pulses of solenoid to 5 T at room temp.

⇒ Partial completion of MERIT physics program.

After 2nd (3rd) 8-hr access(es):

Can now pulse magnet to 15 T, ⇒ full MERIT physics program.