

Cullwick's Paradox: Charged Particle on the Axis of a Toroidal Magnet

Kirk T. McDonald

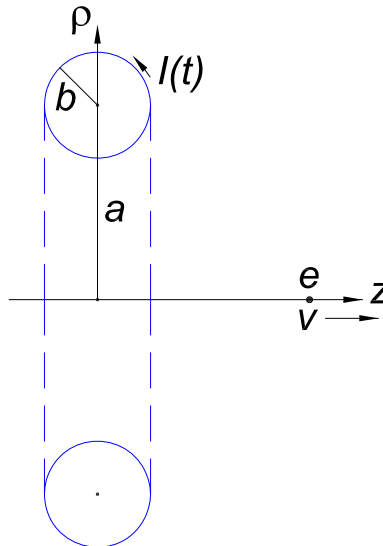
Joseph Henry Laboratories, Princeton University, Princeton, NJ 08544

(June 4, 2006; updated February 26, 2019)

1 Problem

In an induction linac [1] a toroidal solenoid magnet carries a time-dependent current $I(t)$ such that the induced electric field can transfer energy from the magnet to charged particles that move along the axis of the toroid.¹

Discuss the force and momentum balance in an idealized induction linac consisting of a single magnet whose form is a torus of major radius a and minor radius $b \ll a$, and a single electron of charge e that moves along the symmetry axis of the toroid. The current I is the total current crossing any major circle on the surface of the torus.



While actual induction linacs contain high-permeability ferrites inside the toroid, whose windings are made from shielded or unshielded conductors, it suffices here to consider a nonconducting toroid (without ferrites) whose currents are due to electric charges fixed on the rims of rotating disks. Neighboring disks have opposite charges and rotate in opposite senses so that the net electric charge (and the net mechanical angular momentum) of the toroid is zero. This configuration of a nonconducting toroid has no azimuthal current, in contrast to a single-layer helical winding on the toroid which includes, in effect, a single azimuthal current loop.

You may assume that (unlike the case of an induction linac) the velocity v of the moving charge e of rest mass m is small compared to c , the speed of light in vacuum, and that

¹Radiation by the time-dependent toroidal current can be neglected in this problem. For an example where radiation by a toroid is emphasized, see [2].

the time variation of the current in the toroid is slow enough that radiation and effects of retardation can be ignored.

Provide an analysis in the rest frame of the moving charge as well as in the lab frame, *i.e.*, the rest frame of the toroid.

Cullwick [3]-[7] noted that this example is paradoxical because no force is exerted on the moving charge when the current is constant in the toroid,² but the moving charge exerts a nonzero force on the toroid.³

2 Solution

The force \mathbf{F}_e on the electric charge e due to the toroid causes a time rate of change of the mechanical momentum \mathbf{P}_e of the electron according to,

$$\mathbf{F}_e = \frac{d\mathbf{P}_e}{dt}, \quad (1)$$

and likewise the force \mathbf{F}_T on the toroid changes the mechanical momentum \mathbf{P}_T of the latter according to,

$$\mathbf{F}_T = \frac{d\mathbf{P}_T}{dt}. \quad (2)$$

The paradox (which dates back to Ampère) is that the magnetic interaction of a moving charge and a current (as well as the magnetic interaction of two moving charges) does not in general obey Newton's third law, $\mathbf{F}_e \neq -\mathbf{F}_T$, so that the total mechanical momentum of the system, $\mathbf{P}_{\text{mech}} = \mathbf{P}_e + \mathbf{P}_T$, is not constant in time, in apparent violation of Newton's first law for an isolated system.

The resolution of such paradoxes is that electromechanical systems in general possess an additional momentum, \mathbf{P}_{EM} , associated with the interaction of the charges and currents with the electromagnetic field such that the total momentum of an isolated system, $\mathbf{P}_e + \mathbf{P}_T + \mathbf{P}_{\text{EM}}$ in the present example, is constant in time.

A further subtlety is that the sum $\mathbf{P}_{\text{mech}} + \mathbf{P}_{\text{EM}}$, while constant, may appear to have a nonzero value for an isolated system at rest. However, a "hidden" mechanical momentum \mathbf{P}_h can be identified that restores the total momentum of a system at rest to zero.

2.1 Analysis in the Lab Frame

2.1.1 The Electromagnetic Momentum

For systems in which effects of radiation and of retardation can be ignored, the electromagnetic momentum can be calculated in various equivalent ways [12, 13] (in Gaussian units),

$$\mathbf{P}_{\text{EM}} = \int \frac{\rho \mathbf{A}}{c} d\text{Vol} = \int \frac{\mathbf{E} \times \mathbf{B}}{4\pi c} d\text{Vol} = \int \frac{\Phi \mathbf{J}}{c^2} d\text{Vol}, \quad (3)$$

²Toroids with a simple helical winding have a net azimuthal current that leads to an external magnetic field. The idealized toroidal field considered here could be better approximated by a double helical winding, with one winding in the opposite sense to the other. See, for example, [2].

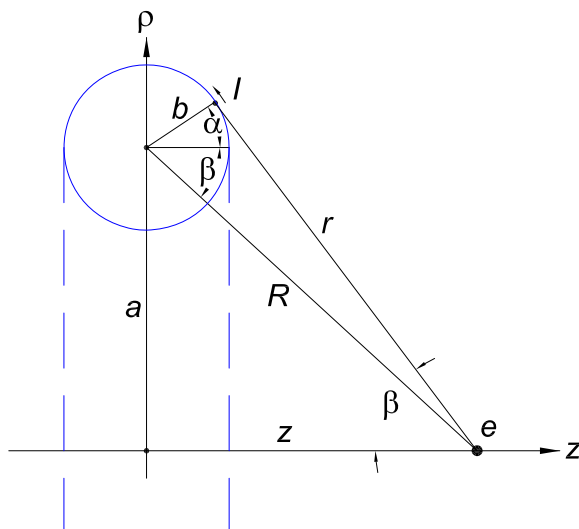
³This paradox was revived in [8]-[11] without reference to Cullwick.

where ρ is the electric charge density, \mathbf{A} is the magnetic vector potential (in the Coulomb gauge where $\nabla \cdot \mathbf{A} = 0$), \mathbf{E} is the electric field, Φ is the electric (scalar) potential, and \mathbf{J} is the electric current density. The first form is due to Faraday⁴ and Maxwell [18], the second form is due to Poynting [19] and Abraham [20], and the third form was introduced by Furry [21].

To calculate the electromagnetic momentum using the first form of eq. (3), we need the vector potential \mathbf{A}_T of the toroid at the position of the charge e , but we do not need the vector potential of the charge since the toroid is assumed to be electrically neutral. The vector potential of the toroid obeys,

$$\nabla \times \mathbf{A}_T = \mathbf{B}_T = B_T \hat{\phi}, \quad (4)$$

where the magnetic field is $B_T = 2I/ac$ inside the toroid and zero outside, and $\hat{\phi}$ is a unit vector in the azimuthal direction in a cylindrical coordinate system (ρ, ϕ, z) . The toroid is centered on the origin with the z -axis as its axis, as shown in the figure below (with radius b exaggerated for clarity).



Cullwick noted [7] that the relation (4) has the same form as Maxwell's equation for the magnetic field due to a conducting wire that forms a (solid) torus of the same dimensions as the (hollow) toroidal magnet when the wire carries azimuthal current density $\mathbf{J} = J \hat{\phi}$,

$$\nabla \times \mathbf{B}_{\text{loop}} = \frac{4\pi}{c} \mathbf{J} = \frac{4\pi}{c} J \hat{\phi}. \quad (5)$$

From the Biot-Savart law we know that the magnetic field along the axis of the current loop is, for $b \ll a$,

$$\mathbf{B}_{\text{loop}}(0, 0, z) \approx \frac{2\pi}{c} \frac{\pi b^2 J a^2}{(z^2 + a^2)^{3/2}} \hat{\mathbf{z}}. \quad (6)$$

⁴Electromagnetic momentum can be identified with the *electro-tonic* state, first discussed by Faraday in Art. 60 of [14]. Other mentions by Faraday of the electrotonic state include Art. 1661 of [15], Arts. 1729 and 1733 of [16], and Art. 3269 of [17].

Comparing eqs. (4) and (5), we see that on replacing $4\pi J$ in eq. (6) by $2I/a$ we obtain the vector potential on the axis of the toroid when $b \ll a$,

$$\mathbf{A}_T(0, 0, z) \approx \frac{\pi b^2 I}{c} \frac{a}{(z^2 + a^2)^{3/2}} \hat{\mathbf{z}}. \quad (7)$$

Hence, the electromagnetic momentum of the system when charge e is at position z on the axis of the toroid is,

$$\mathbf{P}_{EM} = \frac{e\mathbf{A}_T(0, 0, z)}{c} = \frac{\pi b^2 I e}{c^2} \frac{a}{(z^2 + a^2)^{3/2}} \hat{\mathbf{z}}, \quad (8)$$

which is independent of the velocity of the charge.

To calculate the electromagnetic momentum using the second form of eq. (3), we note that the electric field at the toroid due to charge e has magnitude $E_e = e/(z^2 + a^2)$ on average, and that the z -component of $\mathbf{E}_e \times \mathbf{B}_T$ (which is the only one remaining after the integral over the toroid volume) is $E_e B_T a/\sqrt{z^2 + a^2}$. Hence,⁵

$$\mathbf{P}_{EM} = \int \frac{\mathbf{E}_e \times \mathbf{B}_T}{4\pi c} d\text{Vol} \approx \frac{e}{z^2 + a^2} \frac{2I}{ac} \frac{a}{\sqrt{z^2 + a^2}} \frac{2\pi a \pi b^2}{4\pi c} \hat{\mathbf{z}} = \frac{\pi b^2 I e}{c^2} \frac{a}{(z^2 + a^2)^{3/2}} \hat{\mathbf{z}}. \quad (9)$$

For completeness, we calculate the electromagnetic momentum using the third form of eq. (3). We must keep the first correction to the spatial dependence of the electric potential Φ_e of charge e over the toroid. Referring to the figure above, we see that $r = \sqrt{R^2 - 2bR \cos(\alpha + \beta) + b^2} \approx R[1 - \frac{b}{R} \cos(\alpha + \beta)]$, $\sin \beta = (a + b \sin \alpha)/r \approx a/R$, and $R = \sqrt{z^2 + a^2}$. Only the z -component of the integral survives, so noting that $J_z d\text{Vol} \rightarrow -Ib \sin \alpha d\alpha$, we find,

$$\begin{aligned} \mathbf{P}_{EM} &= \int \frac{\Phi_e \mathbf{J}}{c^2} d\text{Vol} = - \int_0^{2\pi} \frac{eI}{c^2 r} b \sin \alpha d\alpha \hat{\mathbf{z}} \\ &\approx - \frac{eIb}{c^2 R} \int_0^{2\pi} \sin \alpha d\alpha \left(1 + \frac{b}{R} (\cos \alpha \cos \beta - \sin \alpha \sin \beta) \right) \hat{\mathbf{z}} \\ &= \frac{\pi b^2 I e}{c^2} \frac{a}{(z^2 + a^2)^{3/2}} \hat{\mathbf{z}}. \end{aligned} \quad (10)$$

2.1.2 The Force on the Electric Charge

The force \mathbf{F}_e on the electric charge is due to the electric field \mathbf{E}_T induced when the current in the toroid changes. This field is conveniently calculated as the time derivative of the vector potential (7). Thus,

$$\mathbf{F}_e = e\mathbf{E}_T = -\frac{e}{c} \frac{\partial \mathbf{A}_T}{\partial t} = -\frac{\pi b^2 \dot{I} e}{c^2} \frac{a}{(z^2 + a^2)^{3/2}} \hat{\mathbf{z}}, \quad (11)$$

where $\dot{I} = dI/dt$, independent of the velocity of the charge. This force is nonzero only when the current I in the toroid is changing.

⁵The ‘‘self momentum’’ of charge e associated with the cross product $\mathbf{E}_e \times \mathbf{B}_e$ is, as usual, assumed to be part of the mechanical momentum of the charge.

2.1.3 The Force on the Toroid

The magnetic field \mathbf{B}_e at a distance \mathbf{r} from the moving charge e is given by,

$$\mathbf{B}_e = e \frac{\mathbf{v}}{c} \times \frac{\hat{\mathbf{r}}}{r^2} = \frac{ev\rho}{cr^3} \hat{\phi}, \quad (12)$$

where \mathbf{v} is its velocity, and ρ is distance from the observation point to the z -axis. This magnetic field acts on the current I in the toroid to exert a force on the latter given by,

$$\mathbf{F}_T = \oint \frac{I}{c} d\mathbf{l} \times \mathbf{B}_e = \frac{evI}{c^2} \oint dl_\rho \frac{\rho}{r^3} \hat{\mathbf{z}} \quad (13)$$

Referring to the figure above, we see that $dl_\rho = b \cos \alpha d\alpha$, $\rho = a + b \sin \alpha \approx a$, $r = \sqrt{R^2 - 2bR \cos(\alpha + \beta) + b^2} \approx R[1 - \frac{b}{R} \cos(\alpha + \beta)]$, $\cos \beta = (z - b \cos \alpha)/r \approx z/R$, and $R = \sqrt{z^2 + a^2}$. Then,

$$\begin{aligned} \mathbf{F}_T &\approx \frac{evI}{c^2} \int_0^{2\pi} b \cos \alpha d\alpha \frac{a}{R^3} \left(1 + 3 \frac{b}{R} (\cos \alpha \cos \beta - \sin \alpha \sin \beta) \right) \hat{\mathbf{z}} \\ &= \frac{3evI\pi b^2}{c^2} \frac{az}{(z^2 + a^2)^{5/2}} \hat{\mathbf{z}} = -\frac{ev}{c} \frac{\partial \mathbf{A}_T}{\partial z}, \end{aligned} \quad (14)$$

recalling eq. (7). This force is nonzero whenever the velocity v of the charge and the current I in the toroid are nonzero.

2.1.4 Momentum Balance in the Lab Frame

The sum of the electromagnetic forces on the system is,

$$\mathbf{F}_T + \mathbf{F}_e = -\frac{e}{c} \frac{\partial \mathbf{A}_T}{\partial t} - \frac{ev}{c} \frac{\partial \mathbf{A}_T}{\partial z} = -\frac{e}{c} \frac{d\mathbf{A}_T}{dt}, \quad (15)$$

where d/dt is the convective derivative according to an observer on the charge e . The total force is nonzero when the charge is moving and/or the current in the toroid is changing, in apparent violation of Newton's third law.

Consistency with Newton's laws is restored if we recall eq. (8) for the electromagnetic momentum of the system, so that we can write,

$$\mathbf{F}_T + \mathbf{F}_e = -\frac{d\mathbf{P}_{EM}}{dt} = -\frac{\partial \mathbf{P}_{EM}}{\partial t} - v \frac{\partial \mathbf{P}_{EM}}{\partial z}, \quad (16)$$

noting that the electromagnetic momentum varies both with the current in the toroid and with the position z of charge e . Then, using eqs. (1) and (2) we see that the total momentum of the system is constant in time,

$$\frac{d\mathbf{P}_T}{dt} + \frac{d\mathbf{P}_e}{dt} + \frac{d\mathbf{P}_{EM}}{dt} = \frac{d\mathbf{P}_{total}}{dt} = 0. \quad (17)$$

2.1.5 “Hidden” Mechanical Momentum

While eq. (17) is a satisfactory representation of overall momentum balance, another aspect of momentum in this example remains paradoxical. Namely, that if the velocity of charge e is zero and toroid is at rest and contains a constant current, then the mechanical momenta \mathbf{P}_e and \mathbf{P}_T appear to be zero, yet the electromagnetic momentum \mathbf{P}_{EM} of eq. (8) is nonzero. If the total momentum of an isolated system at rest is to be zero, in accordance with usual expectations,⁶ there must be an additional, “hidden” momentum in the system that is equal and opposite to the \mathbf{P}_{EM} .

Suppose that at some time, the current in the toroid drops from its steady initial value to zero. Then, the electron is accelerated until its momentums equal the momentum (8 initially stored in the static electromagnetic field. The final field momentum is zero (in the sense that consider the momentum of the self field of the momentum electron to be part of its “mechanical” momentum). The moving electron exerts a force on the toroid as long as its current is still nonzero, such that the toroid receives a momentum “kick” equal and opposite to the final momentum of the electron. That is, the final, total momentum of the system is zero if the system is an isolated one.

The initial “hidden” mechanical momentum of the toroid has been transferred into the “overt” momentum of the toroid as the current dropped to zero. Meanwhile, the initial field momentum of the system was transferred into the “mechanical” momentum of the electron.

At all times, the total momentum of the system was zero (if the system was isolated).

The question of whether the electromagnetic momentum (3) itself corresponds to a kind of “hidden” mechanical momentum was considered by Maxwell in Arts. 552 and 590 of [24], who felt that the issue could not be settled at that time. Cullwick appears to have concluded that the electromagnetic momentum associated with currents actually is the mechanical momentum of the moving charges that comprise the currents. See chap. 18 of [7]. However, this view does not ensure that the total momentum is zero for an isolated system at rest.⁷

Rather, we argue that if the charge e is brought sufficient slowly from “infinity” to rest near the toroid, then the force (14) is always negligible, and negligible work is done on the toroid during this process. The toroid remains at rest so long as the velocity of the charge e is negligible. The total energy of a charge e' of rest mass M that participates in the current I of the toroid remains Mc^2 . When charge e' is in the electric potential $\Phi = e/r$ of charge

⁶These expectations have been captured in the so-called center-of-energy theorem. See the Appendix of [9], sec. 2 of [22], and sec. I of [23].

⁷Suppose that all the rest mass M_T of the toroid is uniformly distributed on the rims of the disks of radius b that rotate with angular velocity $\omega = I/Q$, where Q is the total charge on these disks. If we ignore the “hidden” mechanical momentum of eq. (19), the mechanical momentum of the toroid has only a z -component given by,

$$\begin{aligned} \mathbf{P}_T &= \int_0^{2\pi} \gamma(\phi) M_T V_z(\phi) \hat{\mathbf{z}} \frac{d\phi}{2\pi} \approx \frac{M_T}{2\pi} \int_0^{2\pi} \left(1 + \frac{V_T^2 + 2V_T b \omega \cos \phi + b^2 \omega^2}{2c^2} \right) (V_T + b \omega \cos \phi) \hat{\mathbf{z}} d\phi \\ &= M_T V_T \left(1 + \frac{V_T^2 + 2b^2 \omega^2}{2c^2} \right) \hat{\mathbf{z}} \end{aligned} \quad (18)$$

where $\mathbf{V}_T = V_T \hat{\mathbf{z}}$ is the velocity of its center of mass. Then, if the toroid is at rest, $V_T = 0$, its mechanical momentum is also zero.

e , its electrical potential energy is $e'\Phi$, so the effective mass M_{eff} of charge e' is must be lower than M , such that $\Delta M_{\text{eff}} = M_{\text{eff}} - M = -e'\Phi/c^2$ according to Einstein's relation for the equivalence of mass and energy.⁸ Following initial discussion of this effect by Shockley [25] and by Coleman and Van Vleck [22], a useful expression for the “hidden” mechanical momentum \mathbf{P}_h was given by Furry [21],

$$\mathbf{P}_h = - \int \frac{\Phi \mathbf{J}}{c^2} d\text{Vol}. \quad (19)$$

who noted that for a single charge e' , $\mathbf{J} d\text{Vol} \leftrightarrow e' \mathbf{v}$, so that the “hidden” mechanical momentum associated with ΔM_{eff} is the $d\mathbf{P}_h = -(e'\Phi/c^2) \mathbf{v} \leftrightarrow -(\Phi \mathbf{J}/c^2) d\text{Vol}$. Comparing with eq. (3) we see that,

$$\mathbf{P}_h = -\mathbf{P}_{\text{EM}}, \quad (20)$$

(and not $+\mathbf{P}_{\text{EM}}$ as argued by Cullwick [7]), so that the total momentum is indeed zero.⁹

2.2 Analysis in the Rest Frame of the Moving Charge

The transformation from the lab frame to the rest frame of charge e requires a boost by the small velocity v , and so we expect the forces to be the same in both frames. However, in the rest frame of the charge e that charge creates no magnetic field, so it appears that the force on the toroid is zero in this frame, and hence Galilean invariance may be violated.

The resolution of this aspect of Cullwick's paradox is to be found in the relativistic transformation of charge and current density, which form a 4-vector, $(c\rho, \mathbf{J})$. We consider only the case that the velocity v of charge e is small compared to the speed of light, so that $\gamma = 1/\sqrt{1 - v^2/c^2} \approx 1$.

In the lab frame there is no charge density ρ associated in the toroid, but in the rest frame of charge e , whose lab velocity is \mathbf{v} , the toroid has a nonzero charge density ρ' given by,

$$\rho' = \gamma \left(\rho - \frac{\mathbf{J} \cdot \mathbf{v}}{c^2} \right) \approx -\frac{\mathbf{J} \cdot \mathbf{v}}{c^2} = -\frac{v J_z}{c^2}, \quad (21)$$

where the $'$ indicates quantities measured in the rest frame of the charge. The lab-frame current consists of positive and negative charge densities that are equal and opposite but which have different velocities. On transforming to a moving frame, the positive and negative charge densities are no longer the same, and a net charge density (21) is observed. See sec. 86 of [31] for further discussion, including the example of a moving ring of current.

Since the current density \mathbf{J} resides on the surface of the toroid, the volume charge density (21) can be re-expressed as a surface-charge density σ' given by,

$$\sigma' \approx \frac{vI}{2\pi a c^2} \sin \alpha, \quad (22)$$

⁸Here we adopt a model of the (electrically neutral) toroidal current as provided pairs of counter-rotating disks with charges fixed to their rims. This avoids issues of shielding of the external electric field in metallic conductors. Compare, for example, [26].

⁹The earliest example on record in which “hidden” momentum plays a role was given by J.J. Thomson in 1904 on p. 348 of [27]. See also [28]. The present example seems to have been the second such. For a general discussion of this topic by the author, see [29]. For a related example involving a magnetized toroid, see [30].

where α the angle shown in the figure above. The charge distribution (22) on the toroid is positive for radial distances ρ greater than a and negative for $\rho < a$, so that total charge on the toroid is zero in the rest frame (as well as in the lab frame).

Charge e exerts an electrostatic force on the charge distribution (22) on the toroid, and, of course, charge e experiences an equal and opposite electrostatic force from the toroid (in addition to the force if the current is changing).

For low-velocity transformations, the current density is unchanged since $\varrho = 0$ in the lab frame,

$$\mathbf{J}' = \gamma (\mathbf{J}_{\parallel} - \varrho \mathbf{v}) + \mathbf{J}_{\perp} \approx \mathbf{J}. \quad (23)$$

We now calculate the electromagnetic momentum \mathbf{P}'_{EM} , and the forces \mathbf{F}'_{T} on the toroid and \mathbf{F}'_e on the charge e in the rest frame of charge e .

2.2.1 The Electromagnetic Momentum

It is simplest to use the first form of eq. (3) to evaluate the electromagnetic momentum in the rest frame. The only vector potential in this frame is that due to the current $\mathbf{J}' \approx \mathbf{J}$ in the toroid. Hence, the rest frame vector potential \mathbf{A}' obeys,

$$\mathbf{A}' = \mathbf{A}'_{\text{T}} \approx \mathbf{A}_{\text{T}}. \quad (24)$$

The rest-frame electromagnetic momentum is therefore,¹⁰

$$\mathbf{P}'_{\text{EM}} = \int \frac{\varrho' \mathbf{A}'}{c} d\text{Vol}' \approx \frac{e \mathbf{A}_{\text{T}}}{c} = \mathbf{P}_{\text{EM}}, \quad (25)$$

the same as in the lab frame. This result illustrates how electromagnetic momentum that is tied to charges and currents does not transform like the space part of an energy-momentum 4-vector. See, for example, sec. 12.10 of [32] for additional comments.

We can, however, relate the electromagnetic momentum to the charge/current-density 4-vector, (Φ, \mathbf{A}) . In the lab frame the electric potential Φ_{T} of the toroid vanishes, so the transformation of the toroid's lab-frame 4-vector $(\Phi_{\text{T}} = 0, \mathbf{A}_{\text{T}})$ to the rest frame of charge e gives,

$$\Phi'_{\text{T}} = \gamma \left(\Phi_{\text{T}} - \frac{\mathbf{v} \cdot \mathbf{A}_{\text{T}}}{c} \right) \approx -\frac{v}{c} A_{\text{T},z}, \quad \mathbf{A}'_{\text{T}} = \gamma \left(\mathbf{A}_{\text{T},\parallel} - \Phi_{\text{T}} \frac{\mathbf{v}}{c} \right) + \mathbf{A}_{\text{T},\perp} \approx \mathbf{A}_{\text{T}}. \quad (26)$$

2.2.2 The Force on the Toroid

The electric field $\mathbf{E}'_e \approx \mathbf{E}_e = e \hat{\mathbf{r}}/r^2$ of charge e exerts a force \mathbf{F}'_{T} on the charge distribution σ' on the toroid in the charge's rest frame given by,¹¹

$$\begin{aligned} \mathbf{F}'_{\text{T}} &= \int \sigma' \mathbf{E}'_e d\text{Area}' = \int \sigma' \frac{e \hat{\mathbf{r}}}{r^2} d\text{Area}' \\ &\approx \int_0^{2\pi} \frac{vI \sin \alpha}{2\pi a c^2} \frac{e(\sin \beta \hat{\boldsymbol{\rho}} - \cos \beta \hat{\mathbf{z}})}{R^2} \left(1 + 2\frac{b}{R} \cos(\alpha + \beta) \right) 2\pi ab d\alpha. \end{aligned} \quad (27)$$

¹⁰We do not include the term $\sigma' \mathbf{A}'_{\text{T}}/c$ in eq. (25) as this is suppressed a factor of c^2 .

¹¹A briefer argument works backwards from the end of eq. (31).

A subtlety compared to the calculations in sec. 2.1 is that the factor $\cos\beta$ in the expression for $\hat{\mathbf{r}}$ in eq. (27) must be expanded to the next order of accuracy. Indeed,

$$\cos\beta = \frac{z - b\cos\alpha}{r} \approx \frac{z}{r} \approx \frac{z}{R} \left(1 + \frac{b}{R} \cos(\alpha + \beta) \right). \quad (28)$$

Thus,

$$\begin{aligned} \mathbf{F}'_{\text{T}} &\approx \frac{vIb}{c^2 R^3} \int_0^{2\pi} \sin\alpha e(a\hat{\boldsymbol{\rho}} - z\hat{\mathbf{z}}) \left(1 + 3\frac{b}{R}(\cos\alpha\cos\beta - \sin\alpha\sin\beta) \right) d\alpha \\ &\approx \frac{3evI\pi b^2}{c^2} \frac{az}{(z^2 + a^2)^{5/2}} \hat{\mathbf{z}} = -\frac{ev}{c} \frac{\partial \mathbf{A}_{\text{T}}}{\partial z} = \mathbf{F}_{\text{T}}. \end{aligned} \quad (29)$$

2.2.3 The Force on the Electric Charge

The force \mathbf{F}'_e on the electric charge in its rest frame is due to the electric field $\mathbf{E}'_{\text{T,ind}}$ induced when the vector potential of the toroid changes at the position of the charge e , and also due to the electric field $\mathbf{E}'_{\text{T},\sigma'}$ of the charge distribution (21) on the toroid. The vector potential \mathbf{A}'_{T} at the charge e is the same in the rest frame as in the lab frame, but in the rest frame \mathbf{A}'_{T} changes due to the velocity $\mathbf{v}_{\text{T}} = -\mathbf{v}$ of the toroid, as well as due to changes in the current I . Hence, the force due to the changing vector potential of the toroid is,

$$\mathbf{F}'_{e,\text{ind}} = e\mathbf{E}'_{\text{T,ind}} = -\frac{e}{c} \frac{\partial \mathbf{A}'_{\text{T}}}{\partial t} - \frac{e}{c} (\mathbf{v}_{\text{T}} \cdot \nabla'_{\text{T}}) \mathbf{A}'_{\text{T}} = -\frac{e}{c} \frac{\partial \mathbf{A}_{\text{T}}}{\partial t} - \frac{ev}{c} \frac{\partial \mathbf{A}_{\text{T}}}{\partial z}, \quad (30)$$

noting that $\nabla'_{\text{T}} = -\nabla'_e (= -\nabla_e)$ since the former refers to the coordinates of the (center of the) toroid while the latter refers to the coordinates of the charge e . The electrostatic force on charge e is equal and opposite to the electrostatic force (27) on the toroid,

$$\mathbf{F}'_{e,\sigma'} = \int e\mathbf{E}'_{\text{T},\sigma'} d\text{Area}' = \int e \frac{-\sigma' \hat{\mathbf{r}}}{r^2} d\text{Area}' = -\mathbf{F}'_{\text{T}} = \frac{ev}{c} \frac{\partial \mathbf{A}_{\text{T}}}{\partial z} = -e\nabla'_e \Phi'_{\text{T}} = -e\nabla_e \Phi'_{\text{T}}(0, 0, z), \quad (31)$$

where the last form refers to the electric potential (26) of the toroid in the rest frame of charge e .

The total force on charge e in its rest frame is,

$$\mathbf{F}'_e = -\frac{e}{c} \frac{\partial \mathbf{A}_{\text{T}}}{\partial t} = \mathbf{F}_e. \quad (32)$$

2.2.4 Momentum Balance in the Rest Frame of Charge e

Once it is recognized that, in the rest frame of charge e , the moving toroid appears to have a nonzero surface charge distribution, we find that the forces on the charge and on the toroid are the same as in the lab frame. Also, the electromagnetic momentum is the same in both frames (which shows that \mathbf{P}_{EM} does not behave exactly like an ordinary momentum in all respects). Hence, the details of momentum balance are the same in both frames.

The sum of the forces on the charge e and on the toroid in the rest frame is,

$$\mathbf{F}'_e + \mathbf{F}'_{\text{T}} = -\frac{e}{c} \frac{\partial \mathbf{A}_{\text{T}}}{\partial t} = -\frac{e}{c} \frac{d\mathbf{A}'_{\text{T}}}{dt} = -\frac{d\mathbf{P}'_{\text{EM}}}{dt}, \quad (33)$$

since the partial and total time derivatives of the vector potential at charge e are the same in the charge's rest frame. Relating the forces to the corresponding time rates of change of momentum, we have,

$$\frac{d\mathbf{P}'_e}{dt} + \frac{d\mathbf{P}'_T}{dt} + \frac{d\mathbf{P}'_{EM}}{dt} = \frac{d\mathbf{P}'_{total}}{dt} = 0. \quad (34)$$

As expected, the total momentum is constant in the rest frame of the charge e .

2.2.5 “Hidden” Mechanical Momentum in the Rest Frame of Charge e

According to the prescription of Furry [21], the “hidden” mechanical momentum in the rest frame of charge e can be calculated as,¹²

$$\mathbf{P}'_h = - \int \frac{\Phi'_e \mathbf{J}'}{c^2} dVol' = -\mathbf{P}'_{EM}. \quad (35)$$

We have seen in eq. (23) that $\mathbf{J}' \approx \mathbf{J}$. Similarly, the electric potential of charge e in its rest frame is that same as that in the lab frame when $v \ll c$, so that $\Phi'_e \approx \Phi_e$. Hence,

$$\mathbf{P}'_h \approx \mathbf{P}_h. \quad (36)$$

Thus, “hidden” mechanical momentum does not transform between moving frames like an ordinary mechanical momentum. The “hidden” momentum, as does the electromagnetic momentum, transforms like the charge-current 4-vector rather than like an energy-momentum 4-vector. Hence, both of these concepts must be treated with care in problems involving transformations between moving frames. See [33, 29] for additional commentary.

2.3 Energy Considerations

2.3.1 Energy Flow in an Induction Linac

In the lab frame the charge e is accelerated by the electric field \mathbf{E}_T that exists when the current in the toroid is changing. The power P absorbed by the charge is,

$$P = \mathbf{F}_e \cdot \mathbf{v} = evE_T(0, 0, z) = -\frac{ev}{c} \frac{\partial}{\partial t} A_T(0, 0, z) = -\frac{ev\dot{I}\pi b^2}{c} \frac{a}{(z^2 + a^2)^{3/2}}. \quad (37)$$

The flow of power from the toroid to the charge is described by the Poynting vector, or more precisely, by the interaction part of the Poynting vector,

$$\mathbf{S}_{int} = \frac{c}{4\pi} \mathbf{E}_T \times \mathbf{B}_e + \frac{c}{4\pi} \mathbf{E}_e \times \mathbf{B}_T. \quad (38)$$

It would be nice to have a plot of the field lines of the Poynting vector (38), which would show them emanating from the toroid and converging on the charge e . Lacking such a plot, we content ourselves with verification that the total Poynting flux across a small surface

¹²We neglect the contribution from $\Phi'_T \mathbf{J}'/c^2$ in eq. (35) as this is suppressed by two additional powers of c .

surrounding charge e , and also across the surface of the toroid, is equal to the power P of eq. (37).

We first consider a small cylindrical surface of radius ρ and length $2l \gg \rho$ centered on the charge e . The electric field due to the toroid is essentially uniform over this surface, so $\mathbf{E}_T \approx E_T(0, 0, z) \hat{\mathbf{z}}$, and the magnetic field \mathbf{B}_e of charge e is given by eq. (12). Outside the toroid the magnetic field \mathbf{B}_T vanishes, so only the first term in eq. (38) contributes there. We can neglect the Poynting flux on the ends of the small cylinder since $\rho \ll l$. Hence, the inward Poynting flux over the surface of this cylinder is,

$$\begin{aligned} - \oint \mathbf{S}_{\text{int}} \cdot d\mathbf{Area} &= -\frac{c}{4\pi} \oint \mathbf{E}_T \times \mathbf{B}_e \cdot d\mathbf{Area} \approx -\frac{c}{4\pi} \int_{-l}^l E_T \hat{\mathbf{z}} \times \frac{ev\rho}{cr^3} \hat{\boldsymbol{\phi}} \cdot 2\pi\rho dz \hat{\boldsymbol{\rho}} \\ &\approx \frac{evE_T\rho^2}{2} \int_{-l}^l \frac{dz}{(z^2 + \rho^2)^{3/2}} = evE_T \frac{l}{\sqrt{l^2 + \rho^2}} \rightarrow evE_T = P, \end{aligned} \quad (39)$$

in the limit that the radius ρ of the cylinder goes to zero.

To evaluate the outward Poynting flux from the surface of the toroid we consider a toroidal surface just outside the actual toroid, so that the second term of eq. (38) can again be neglected. The electric field \mathbf{E}_T due to the changing current \dot{I} flows in loops of radius b just outside the toroid. From Faraday's law, the magnitude of the induced electric field at the surface of the toroid is,

$$E_T = -\frac{b\dot{B}_\phi}{2c} = -\frac{b\dot{I}}{ac}, \quad (40)$$

recalling that $B_\phi = 2I/ac$ inside the toroid. The magnetic field of charge e at the toroid has magnitude $B_e = eva/c(z^2 + a^2)^{3/2}$. The cross product $\mathbf{E}_T \times \mathbf{B}_e$ is directed along the outward normal to the surface of the toroid. Hence, the total outward Poynting flux from the toroid is,

$$\begin{aligned} \oint \mathbf{S}_{\text{int}} \cdot d\mathbf{Area} &= \frac{c}{4\pi} E_T B_e \text{Area} = -\frac{c}{4\pi} \frac{b\dot{I}}{ac} \frac{eva}{c(z^2 + a^2)^{3/2}} 2\pi a 2\pi b \\ &= -\frac{ev\dot{I}\pi b^2}{c} \frac{a}{(z^2 + a^2)^{3/2}} = P, \end{aligned} \quad (41)$$

which equals the power P , eq. (37), that is absorbed by the accelerating charge.

2.3.2 Energy Balance in the Lab Frame

There are several forms of energy stored in the system,

$$U = U_e + U_T + U_{\text{int}}, \quad (42)$$

where the energy,

$$U_e = \gamma mc^2 \approx mc^2 + \frac{mv^2}{2} \quad (43)$$

of the moving charge includes its electromagnetic self energy. The energy U_T of the toroid can be written as,

$$U_T = U_{T,\text{mech}} + U_{T,\text{EM}}. \quad (44)$$

We suppose that all the rest mass M_T of the toroid is uniformly distributed on the rims of the disks of radius b that rotate with angular velocity $\omega = I/Q$, where Q is the total charge on these disks. Then, the mechanical energy of the toroid is,

$$\begin{aligned} U_{T,\text{mech}} &= \int_0^{2\pi} \gamma(\phi) M_T c^2 \frac{d\phi}{2\pi} \approx \frac{M_T c^2}{2\pi} \int_0^{2\pi} \left(1 + \frac{V_T^2 + 2V_T b\omega \cos\phi + b^2\omega^2}{2c^2} \right) d\phi \\ &= M_T c^2 + \frac{M_T(V_T^2 + b^2\omega^2)}{2} = M_T c^2 + \frac{M_T(V_T^2 + b^2 I^2/Q^2)}{2}, \end{aligned} \quad (45)$$

where $\mathbf{V}_T = V_T \hat{\mathbf{z}}$ is the velocity of its center of mass. The electromagnetic energy stored in the toroid is, neglecting the small electric field \mathbf{E}_T and the small magnetic field \mathbf{B}_T outside the toroid,

$$U_{T,\text{EM}} = \int \frac{E_T^2 + B_T^2}{8\pi} d\text{Vol} \approx \int_T \frac{B_T^2}{8\pi} d\text{Vol} \approx \frac{(2I/ac)^2}{8\pi} 2\pi ab^2 = \frac{ab^2 I^2}{2c^2}. \quad (46)$$

The electromagnetic interaction energy of the magnetic fields of the charge and toroid is, in the approximation mentioned above,

$$U_{\text{int}} = \int \frac{\mathbf{E}_T \cdot \mathbf{E}_e + \mathbf{B}_T \cdot \mathbf{B}_e}{4\pi} d\text{Vol} \approx \int_T \frac{\mathbf{B}_T \cdot \mathbf{B}_e}{4\pi} d\text{Vol} \approx \frac{(2I/ac)}{4\pi} \frac{eva}{c(a^2 + z^2)^{3/2}} 2\pi ab^2 = \frac{ab^2 Iev}{c(a^2 + z^2)^{3/2}}, \quad (47)$$

where $z = z_e - z_T$ is the distance between the charge and the center of the toroid.

The time rate of change of the energy of the system is,

$$\begin{aligned} \frac{dU}{dt} &\approx m\dot{v} + M_T V_T \dot{V}_T + \left(\frac{M_T b^2}{Q^2} + \frac{ab^2}{2c^2} \right) I \dot{I} + \frac{ab^2 \dot{I}ev}{c(a^2 + z^2)^{3/2}} + \frac{ab^2 I \dot{e}v}{c(a^2 + z^2)^{3/2}} \\ &\quad + \frac{3ab^2 Ievz(v - V_T)}{c(a^2 + z^2)^{5/2}}. \end{aligned} \quad (48)$$

For an induction linac, the toroid would be at rest in the laboratory ($V_T = 0 = \dot{V}_T$) and an external source would provide the power dU/dt that is transferred to the moving charge, as well as providing for the changes in the various other forms of energy of the system.

We can also contemplate the idealized case of an isolated system with no external power source. Then, the total energy U is constant in time. The first two terms of eq. (48) can be written as $F_e v + F_T V_T$, and then using eqs. (11) and (21) we have that,

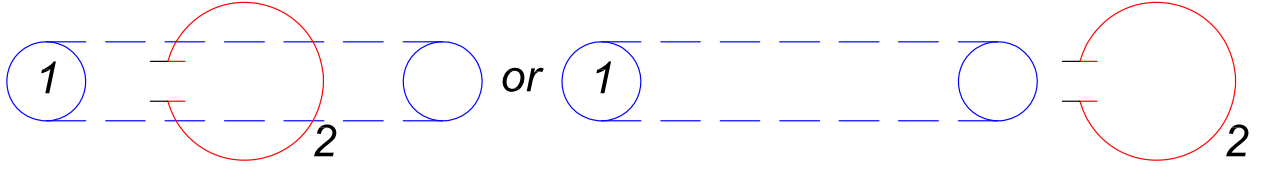
$$0 \approx \left(\frac{M_T b^2}{Q^2} + \frac{ab^2}{2c^2} \right) \dot{I} + \frac{ab^2 e \dot{v}}{c(a^2 + z^2)^{3/2}} + \frac{3ab^2 e v^2 z}{c(a^2 + z^2)^{5/2}}, \quad (49)$$

which relates the change in the current in the toroid to the change in the motion of the charge, such that energy is conserved. The derivatives \dot{I} and \dot{v} cannot both be negligible in an isolated system unless z is so large that the third term in eq. (49) is also negligible.

A Appendix: Circuit Version of Cullwick's Paradox

A variant on Cullwick's paradox can be given in circuit form [34]. Consider a toroidal solenoid (1) and a simple LC circuit (2) in the form of a single-turn loop with a capacitor, as shown

in the figure below. The LC circuit does not link the toroid. As usual in circuit analysis, we suppose that the frequency of the currents is low enough that they are spatially uniform in both the toroid and the LC circuit (and currents on the capacitor plates are neglected).



The \mathcal{EMF} \mathcal{E}_1 induced in the toroid by an oscillatory current $I_2 e^{i\omega t}$ in the LC circuit is,

$$\mathcal{E}_1 = \oint_1 \mathbf{E}_1(I_2) \cdot d\mathbf{l}_1 = -\frac{1}{c} \frac{d}{dt} \oint_1 \mathbf{A}_1(I_2) \cdot d\mathbf{l}_1 = -\frac{1}{c^2} \frac{dI_2}{dt} \oint_1 \oint_2 \frac{d\mathbf{l}_2 \cdot d\mathbf{l}_1}{r_{12}^2} \equiv -i\omega M_{12} I_2, \quad (50)$$

where the electrical field in/on the toroid, $\mathbf{E} = -\nabla V - \partial \mathbf{A} / \partial ct$, is entirely due to the vector potential \mathbf{A} (if we ignore the small fringe field of the capacitor, as always done in circuit analysis), and the (retarded) vector potential is due only to the conduction current in the LC circuit [35] (see also [2, 36]-[47]). That is, the integral \int_2 is restricted to the conductor of the LC circuit and does not include the “displacement current” in the gap between the capacitor plates.¹³ Then, the mutual inductance M_{12} is given by,

$$M_{12} = \frac{1}{c^2} \oint_1 \oint_2 \frac{d\mathbf{l}_2 \cdot d\mathbf{l}_1}{r_{12}^2}. \quad (51)$$

If circuit 2 were a closed loop then $M_{12} = 0$, but in the present case M_{12} is nonzero. Similarly, the \mathcal{EMF} \mathcal{E}_2 induced in the LC circuit by current $I_1 e^{i\omega t}$ in the toroid is given by,

$$\mathcal{E}_2 = \int_2 \mathbf{E}_2(I_1) \cdot d\mathbf{l}_2 = -\frac{1}{c} \frac{d}{dt} \int_2 \mathbf{A}_2(I_1) \cdot d\mathbf{l}_2 = -\frac{1}{c^2} \frac{dI_1}{dt} \int_2 \oint_1 \frac{d\mathbf{l}_1 \cdot d\mathbf{l}_2}{r_{21}^2} \equiv -i\omega M_{21} I_1, \quad (52)$$

where again the integral \int_2 is restricted to the conductor of the LC circuit. That is, the \mathcal{E}_2 does not include a contribution from the gap between the capacitor plates because there is no charge there for the electric field to act on (and \mathcal{E}_2 is unique only if the integral is restricted to the physical conductor).¹⁴ The mutual inductance M_{21} is given by,

$$M_{21} = \frac{1}{c^2} \int_2 \oint_1 \frac{d\mathbf{l}_1 \cdot d\mathbf{l}_2}{r_{21}^2} = M_{12}, \quad (53)$$

since $r_{12} = r_{21}$.

¹³The unphysical result of [34] is based on the erroneous assumption that the “displacement current” $\partial \mathbf{D} / \partial t$ is a source of the vector potential (and of \mathcal{EMF}). This leads to the misunderstanding that $M_{12} = 0$ when the integral \int_2 is taken to be over a closed loop so as to include the “displacement current”.

¹⁴Another form of the circuit paradox would result from accepting that M_{12} is nonzero but erroneously supposing that the electric field in the gap of the capacitor contributes to the \mathcal{EMF} induced in the LC circuit by the toroid. Typical analyses of LC circuits make this assumption with little error because the length of the gap between the capacitor plates is small compared to the circumference of the circuit. However, when the second loop is a toroid that is not linked by the LC circuit, including the electric field in the gap in the calculation of the \mathcal{EMF} leads to the misunderstanding that $M_{21} = 0$.

A.1 Energy Conservation

For completeness, we perform an energy analysis of the coupled loops 1 and 2, supposing that they contain resistances R_1 and R_2 that dissipate energy. When the toroid is driven by an AC voltage source $V e^{i\omega t}$, the loop equation for the toroid is,

$$V = R_1 I_1 + i\omega L_1 I_1 + i\omega M_{12} I_2, \quad (54)$$

where L_1 is the self inductance of the toroid, and that for the LC circuit (which has no voltage source) is,

$$0 = R_2 I_1 + i\omega L_2 I_2 - \frac{i}{\omega C_2} I_2 + i\omega M_{21} I_1. \quad (55)$$

From eq. (55) we have that,

$$I_2 = -\frac{i\omega^2 M_{21} C_2}{\omega R_2 C_2 + i(\omega^2 L_2 C_2 - 1)} I_1 = -\frac{i\omega^2 M_{21} C_2 [\omega R_2 C_2 - i(\omega^2 L_2 C_2 - 1)]}{\omega^2 R_2^2 C_2^2 + (\omega^2 L_2 C_2 - 1)^2} I_1, \quad (56)$$

and then eq. (54) tells us that,

$$V = \left[R_1 + i\omega L_1 + \frac{\omega^3 M_{12} M_{21} C_2 [\omega R_2 C_2 - i(\omega^2 L_2 C_2 - 1)]}{\omega^2 R_2^2 C_2^2 + (\omega^2 L_2 C_2 - 1)^2} \right] I_1. \quad (57)$$

The time-average power delivered by the voltage source is,

$$P = \frac{1}{2} \text{Re}(V I_1^*) = \frac{1}{2} \left[R_1 + \frac{\omega^4 M_{12} M_{21} R_2 C_2^2}{\omega^2 R_2^2 C_2^2 + (\omega^2 L_2 C_2 - 1)^2} \right] |I_1|^2, \quad (58)$$

while the power consumed in the toroid is,

$$P_1 = \frac{1}{2} R_1 |I_1|^2, \quad (59)$$

and the power consumed in the LC circuit is,

$$P_2 = \frac{1}{2} R_2 |I_2|^2 = \frac{1}{2} R_2 \frac{\omega^4 M_{21}^2 C_2^2}{\omega^2 R_2^2 C_2^2 + (\omega^2 L_2 C_2 - 1)^2} |I_1|^2, \quad (60)$$

recalling eq. (56). Thus, energy is conserved,

$$P = P_1 + P_2, \quad (61)$$

since $M_{21} = M_{12}$ according to eq. (53).

Clearly, if the voltage source were connected to the LC circuit, rather than to the toroid, relation (61) would again hold.

A.2 Beyond the Approximations of Circuit Analysis

The preceding circuit analysis makes various approximations that are not strictly correct.

The current in the circuits has been assumed to be spatially uniform, whereas there is a nonuniform surface current on both sides of the plates of the capacitor [48].

The effect of the electric fringe field of the capacitor has been neglected.

The effect of the physical configuration of the voltage source on the electric and magnetic fields has been neglected.

The effect of any measuring devices, used to probe the current in the circuits, has been neglected.

The magnetic field outside the toroidal solenoid has been assumed to be zero in the quasistatic approximation, whereas it is actually nonzero [2].

Radiation has been neglected.¹⁵

The toroid, the capacitor, and the wire loop of the LC circuit are made of rather good conductors, at whose surface the tangential component of the electric field is negligible. That is, $\int \mathbf{E} \cdot d\mathbf{l}$ is negligible for these good conductors, and is significantly nonzero only in the voltage source and in the load resistor. So, the forms (50) and (52) for the \mathcal{EMFs} are not accurate (and the concept of mutual inductance is only approximate).

To deal with all of these effects a more sophisticated analysis is required, of the sort made for antenna systems. There, systems with good conductors (with finite thicknesses) and possible, compact load capacitors, inductors and resistors are analyzed via an integral equation (due to Pocklington [50]) that incorporates the good-conductor boundary condition. These calculations are better performed numerically than analytically.¹⁶ Energy conservation is, of course, maintained throughout such analyses.

When dealing with pairs of antennas, one transmitting and one receiving, as in the example of this Appendix, a reciprocity relation can be formulated (see, for example, [53]) between the drive voltages and driven currents when the roles of transmitter and receiver are reversed. This is a generalization of the condition $M_{12} = M_{21}$ on the mutual inductances of circuit analysis.

Thus, there exists a powerful formalism to go beyond the approximations of circuit analysis, although this formalism does not lend itself to simple analytic results, and we content ourselves with the circuit analysis given in the main part of this Appendix.

References

- [1] N.C. Cristofilos *et al.*, *High Current Linear Induction Accelerator for Electrons*, Rev. Sci. Instr. **35**, 585 (1964), http://kirkmcd.princeton.edu/examples/accel/christofilos_rsi_35_88_64.pdf
- [2] K.T. McDonald, *Electromagnetic Fields of a Small Helical Toroidal Antenna* (Dec. 8, 2008), <http://kirkmcd.princeton.edu/examples/cwhta.pdf>
- [3] E.G. Cullwick, *Forces between Moving Charges*, Elec. Eng. **66**, 518 (1947), http://kirkmcd.princeton.edu/examples/EM/cullwick_ee_66_518_47.pdf

¹⁵For discussion of a nominally simple circuit for which radiation cannot be ignored, see [49].

¹⁶See, for example, [51] and [52] for analytic discussion of this approach.

- [4] E.G. Cullwick, *An Anomaly in Electromagnetic Theory*, Nature **161**, 969 (1948), http://kirkmcd.princeton.edu/examples/EM/cullwick_nature_161_969_48.pdf
- [5] E.G. Cullwick, *Relatively Moving Charge and Coil*, Wireless Eng. **25**, 401 (1948), http://kirkmcd.princeton.edu/examples/EM/cullwick_we_25_401_48.pdf
- [6] E.G. Cullwick, *Electromagnetic Momentum and Newton's Third Law*, Nature **170**, 425 (1952), http://kirkmcd.princeton.edu/examples/EM/cullwick_nature_170_425_52.pdf
- [7] E.G. Cullwick, *Electromagnetism and Relativity* (Longmans, Green & Co., London, 1959), pp. 232-238, http://kirkmcd.princeton.edu/examples/EM/cullwick_em_rel.pdf
- [8] G.T. Trammel, *Aharonov-Bohm Paradox*, Phys. Rev. **134**, B1183 (1964), http://kirkmcd.princeton.edu/examples/EM/trammel_pr_134_B1183_64.pdf
- [9] T.T. Taylor, *Electrodynamic Paradox and the Center-of-Mass Principle*, Phys. Rev. **137**, B467 (1965), http://kirkmcd.princeton.edu/examples/EM/taylor_pr_137_B467_65.pdf
- [10] J.M. Aguirregabiria, A Hernández and M Rivas, *Linear momentum density in quasistatic electromagnetic systems*, Eur. J. Phys. **25**, 255 (2004), http://kirkmcd.princeton.edu/examples/EM/aguirregabiria_ejp_25_555_04.pdf
- [11] J.A. Heras and R. Heras, *Can classical electrodynamics predict nonlocal effects?* Eur. Phys. J. Plus **136**, 847 (2021), http://kirkmcd.princeton.edu/examples/EM/heras_epjp_136_847_21.pdf
- [12] J.D. Jackson, *Relation between Interaction terms in Electromagnetic Momentum $\int d^3\mathbf{x} \mathbf{E} \times \mathbf{B}/4\pi c$ and Maxwell's $e\mathbf{A}(\mathbf{x},t)/c$, and Interaction terms of the Field Lagrangian $\mathcal{L}_{EM} = \int d^3\mathbf{x} [E^2 - B^2]/8\pi$ and the Particle Interaction Lagrangian, $\mathcal{L}_{int} = e\phi - e\mathbf{v} \cdot \mathbf{A}/c$* (May 8, 2006), http://kirkmcd.princeton.edu/examples/EM/jackson_050806.pdf
- [13] K.T. McDonald, *Four Expressions for Electromagnetic Field Momentum* (April 10, 2006), http://kirkmcd.princeton.edu/examples/pem_forms.pdf
- [14] M. Faraday, *Experimental Researches in Electricity*, Phil. Trans. Roy. Soc. London **122**, 125 (1832), kirkmcd.princeton.edu/examples/EM/faraday_ptrsl_122_163_32.pdf
- [15] M. Faraday, *Experimental Researches in Electricity.—Thirteenth Series*, Phil. Trans. Roy. Soc. London **128**, 125 (1838), http://kirkmcd.princeton.edu/examples/EM/faraday_ptrsl_128_125_38.pdf
- [16] M. Faraday, *Experimental Researches in Electricity.—Fourteenth Series*, Phil. Trans. Roy. Soc. London **128**, 265 (1838), http://kirkmcd.princeton.edu/examples/EM/faraday_ptrsl_128_265_38.pdf
- [17] M. Faraday, *On the Physical Character of the Lines of Magnetic Force*, Phil. Mag. **3**, 401 (1852), kirkmcd.princeton.edu/examples/EM/faraday_pm_3_401_52.pdf
- [18] Secs. 22-24 and 57 of J.C. Maxwell, *A Dynamical Theory of the Electromagnetic Field*, Phil. Trans. Roy. Soc. London **155**, 459 (1865), http://kirkmcd.princeton.edu/examples/EM/maxwell_ptrsl_155_459_65.pdf

- [19] J.H. Poynting, *On the Transfer of Energy in the Electromagnetic Field*, Phil. Trans. Roy. Soc. London **175**, 343 (1884),
http://kirkmcd.princeton.edu/examples/EM/poynting_ptrs1_175_343_84.pdf
- [20] M. Abraham, *Prinzipien der Dynamik des Elektrons*, Ann. Phys. **10**, 105 (1903),
http://kirkmcd.princeton.edu/examples/EM/abraham_ap_10_105_03.pdf
- [21] W.H. Furry, *Examples of Momentum Distributions in the Electromagnetic Field and in Matter*, Am. J. Phys. **37**, 621 (1969),
http://kirkmcd.princeton.edu/examples/EM/furry_ajp_37_621_69.pdf
- [22] S. Coleman and J.H. Van Vleck, *Origin of “Hidden Momentum” Forces on Magnets*, Phys. Rev. **171**, 1370 (1968), http://kirkmcd.princeton.edu/examples/EM/coleman_pr_171_1370_68.pdf
- [23] M.G. Calkin, *Linear Momentum of the Source of a Static Electromagnetic Field*, Am. J. Phys. **39**, 513 (1971), http://kirkmcd.princeton.edu/examples/EM/calkin_ajp_39_513_71.pdf
- [24] J.C. Maxwell, *A Treatise on Electricity and Magnetism*, Vol. 2, 3rd ed. (Clarendon Press, 1892) The first edition appeared in 1873.
http://kirkmcd.princeton.edu/examples/EM/maxwell_treatise_v2_92.pdf
- [25] W. Shockley and R.P. James, *“Try Simplest Cases” Discovery of “Hidden Momentum” Forces on Magnetic Currents*, Phys. Rev. Lett. **18**, 876 (1967),
http://kirkmcd.princeton.edu/examples/EM/shockley_prl_18_876_67.pdf
- [26] K.T. McDonald, *“Hidden” Momentum in a Current Loop* (June 30, 2012),
<http://kirkmcd.princeton.edu/examples/penfield.pdf>
- [27] J.J. Thomson, *On Momentum in the Electric Field*, Phil. Mag. **8**, 331 (1904),
http://kirkmcd.princeton.edu/examples/EM/thomson_pm_8_331_04.pdf
- [28] K.T. McDonald, *J.J. Thomson and “Hidden” Momentum* (Apr. 30, 2014),
<http://kirkmcd.princeton.edu/examples/thomson.pdf>
- [29] K.T. McDonald, *On the Definition of “Hidden” Momentum* (July 9, 2012),
<http://kirkmcd.princeton.edu/examples/hiddendef.pdf>
- [30] K.T. McDonald, *“Hidden” Momentum in a Magnetized Toroid* (Mar. 29, 2015),
http://kirkmcd.princeton.edu/examples/toroid_cap.pdf
- [31] R. Becker, *Electromagnetic Fields and Interactions* (Dover, 1964),
http://kirkmcd.princeton.edu/examples/EM/becker_64_EIV.pdf
http://kirkmcd.princeton.edu/examples/EM/becker_64_sec86.pdf
- [32] J.D. Jackson, *Classical Electrodynamics*, 3rd ed. (Wiley, 1999),
http://kirkmcd.princeton.edu/examples/EM/jackson_ce3_99.pdf
- [33] V. Hnizdo, *Hidden momentum and the electromagnetic mass of a charge and current carrying body*, Am. J. Phys. **65**, 55 (1997),
http://kirkmcd.princeton.edu/examples/EM/hnizdo_ajp_65_55_97.pdf

- [34] Y. Liang, Q. Liang, and X. Liu, *An Experimental Evidence of Energy Non-Conservation*, http://kirkmcd.princeton.edu/examples/EM/liang_1005.0078.pdf
<https://vixra.org/abs/1005.0078>
- [35] L. Lorenz, *Ueber die Identität der Schwingungen des Lichts mit den elektrischen Strömen*, *Ann. Phys.* **207**, 243 (1867),
http://kirkmcd.princeton.edu/examples/EM/lorenz_ap_207_243_67.pdf
On the Identity of the Vibration of Light with Electrical Currents, *Phil. Mag.* **34**, 287 (1867), http://kirkmcd.princeton.edu/examples/EM/lorenz_pm_34_287_67.pdf
- [36] S.J. Raff, *Ampere's Law and the Vector Potential*, *Am. J. Phys.* **26**, 454 (1958),
http://kirkmcd.princeton.edu/examples/EM/raff_ajp_26_454_58.pdf
- [37] A.P. French and J.P. Tesson, *Displacement Current and Magnetic Fields*, *Am. J. Phys.* **31**, 201 (1963), http://kirkmcd.princeton.edu/examples/EM/french_ajp_31_201_63.pdf
- [38] R.M. Whitmer, *Calculation of Magnetics and Electric Fields from Displacement Currents*, *Am. J. Phys.* **33**, 481 (1965),
http://kirkmcd.princeton.edu/examples/EM/whitmer_ajp_33_481_65.pdf
- [39] E.G. Cullwick, *The Fundamentals of Electro-Magnetism*, 3rd ed. (Cambridge U. Press, 1966), chap. 3, sec. 14, http://kirkmcd.princeton.edu/examples/EM/cullwick_em_66.pdf
- [40] W.G.V. Rosser, *Displacement current and Maxwell's equations*, *Am. J. Phys.* **43**, 502 (1975), http://kirkmcd.princeton.edu/examples/EM/rosser_ajp_43_502_75.pdf
Does the displacement current in empty space produce a magnetic field?, *Am. J. Phys.* **44**, 1221 (1976), http://kirkmcd.princeton.edu/examples/EM/rosser_ajp_44_1221_76.pdf
- [41] A. Shadowitz, *The Electromagnetic Field* (McGraw-Hill, 1977; Dover reprint, 1978), sec. 11-2, http://www.kirkmcd.princeton.edu/examples/EM/shadowitz_75_chap11.pdf
- [42] W.G.V. Terry, *The connection between the charged-particle current and the displacement current*, *Am. J. Phys.* **50**, 742 (1982),
http://kirkmcd.princeton.edu/examples/EM/terry_ajp_50_742_82.pdf
- [43] W.G.V. Rosser, *The displacement current*, *Am. J. Phys.* **51**, 1149 (1983),
http://kirkmcd.princeton.edu/examples/EM/rosser_ajp_51_1149_83.pdf
- [44] T.A. Weber and D.J. Macomb, *On the equivalence of the laws of Biot-Savart and Ampere*, *Am. J. Phys.* **57**, 57 (1989),
http://kirkmcd.princeton.edu/examples/EM/weber_ajp_57_57_89.pdf
- [45] O.D. Jefimenko, *Comment on "On the equivalence of the laws of Biot-Savart and Ampere"*, *Am. J. Phys.* **58**, 505 (1990),
http://kirkmcd.princeton.edu/examples/EM/jefimenko_ajp_58_505_90.pdf
- [46] D.F. Bartlett, *Conduction current and the magnetic field in a parallel plate capacitor*, *Am. J. Phys.* **58**, 1168 (1990), http://kirkmcd.princeton.edu/examples/EM/bartlett_ajp_58_1168_90.pdf

- [47] D.J. Griffiths and M.A. Heald, *Time-dependent generalizations of the Biot-Savart and Coulomb laws*, Am. J. Phys. **59**, 111 (1991),
http://kirkmcd.princeton.edu/examples/EM/griffiths_ajp_59_111_91.pdf
- [48] K.T. McDonald, *Magnetic Field in a Time-Dependent Capacitor* (Oct. 30, 2003),
<http://kirkmcd.princeton.edu/examples/displacement.pdf>
- [49] K.T. McDonald, *A Capacitor Paradox* (July 10, 2002),
<http://kirkmcd.princeton.edu/examples/twocaps.pdf>
- [50] H.C. Pocklington, *Electrical Oscillations in Wires*, Proc. Camb. Phil. Soc. **9**, 324 (1897),
http://kirkmcd.princeton.edu/examples/EM/pocklington_camb_9_324_97.pdf
- [51] K.T. McDonald, *Voltage Across the Terminals of a Receiving Antenna* (June 25, 2007),
<http://kirkmcd.princeton.edu/examples/receiver.pdf>
- [52] K.T. McDonald, *Currents in a Center-Fed Linear Dipole Antenna* (June 27, 2007),
<http://kirkmcd.princeton.edu/examples/transmitter.pdf>
- [53] K.T. McDonald, *An Antenna Reciprocity Theorem* (Apr. 3, 2010),
<http://kirkmcd.princeton.edu/examples/reciprocity.pdf>