

Plots of Drift Chamber Wire Creep

1 December 1996 Al Wire Shows Serious Creep

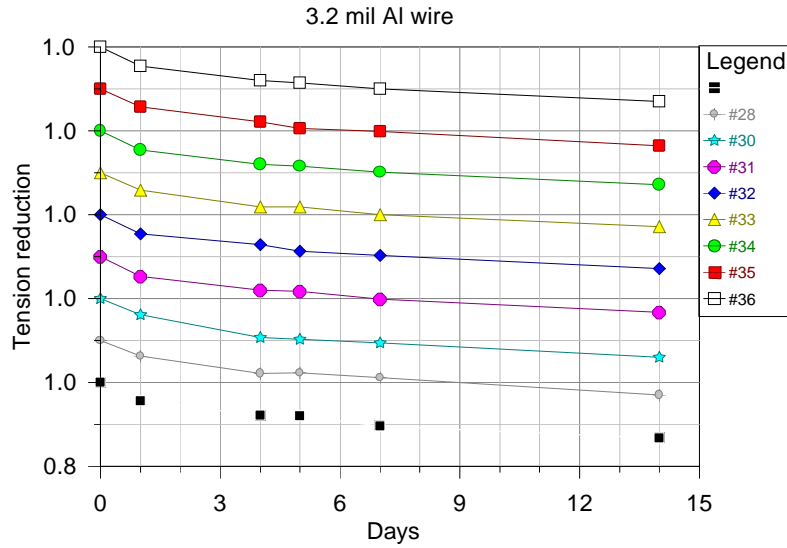


Figure 1: CFW 80- μm wire delivered in Dec. 1996.

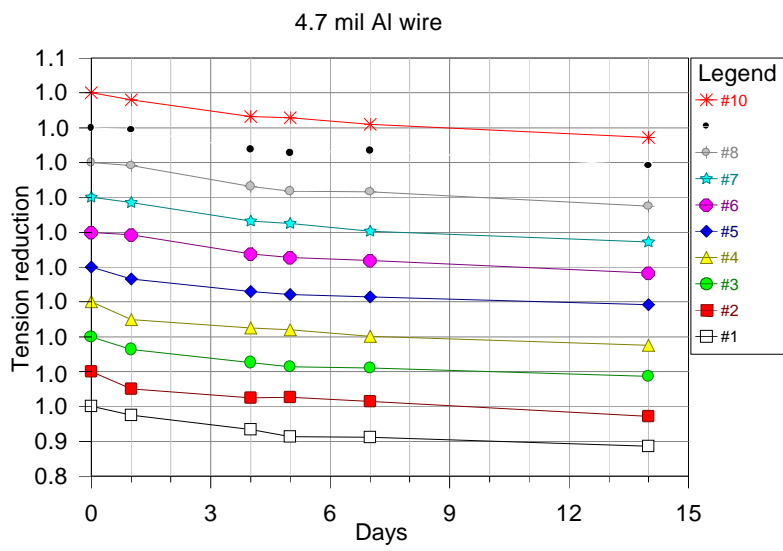


Figure 2: CFW 120- μ m wire delivered in Dec. 1996.

2 Older Wire Shows Knee at 100-120 Days

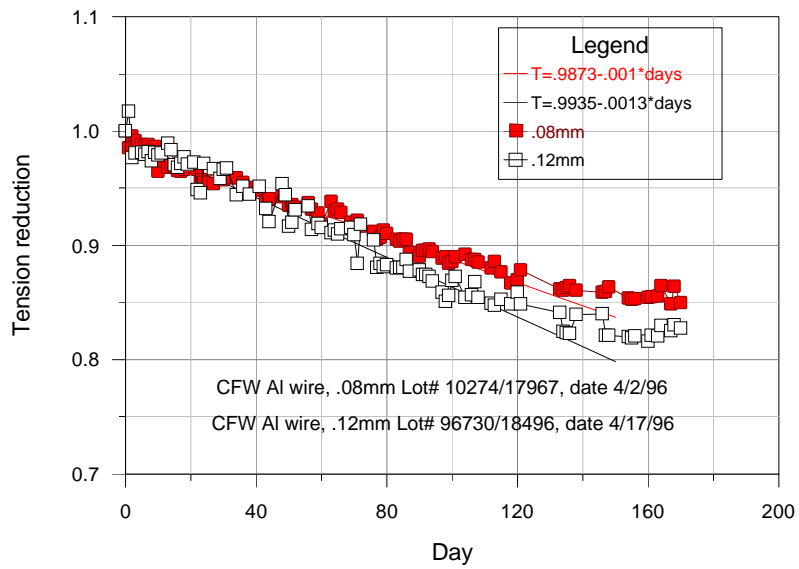


Figure 3: CFW samples purchased in March 1996.

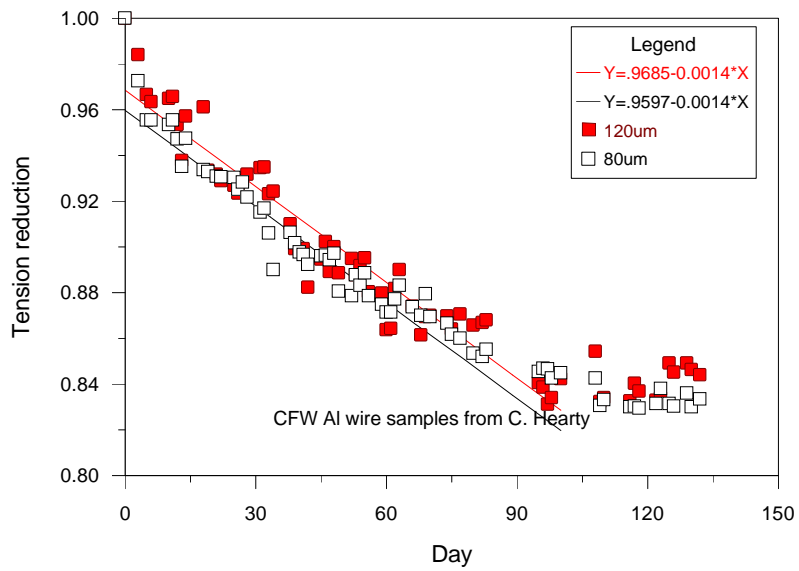


Figure 4: CFW samples purchased in Summer 1995.

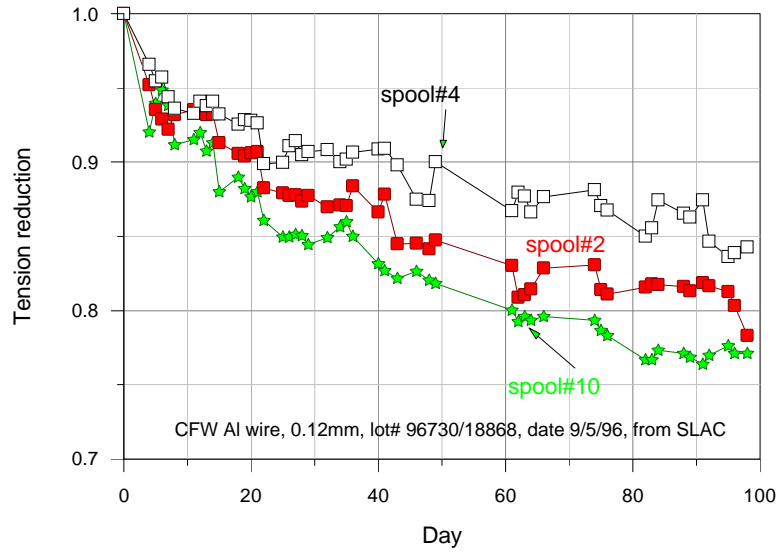


Figure 5: CFW samples purchased in July 1996.

3 KEK Wire Shows Some Creep

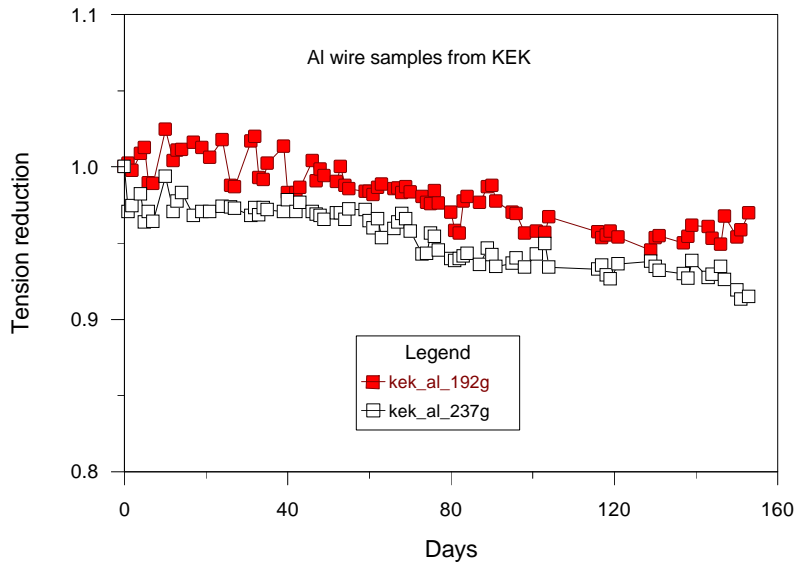


Figure 6: KEK bare aluminum wire, 125 μm .